

142.5mm

## 9" 12" HYDRAULIC VEHICLE POSITIONING JACK

### OWNER'S MANUAL



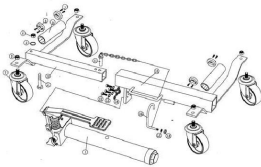
**WARNING:** Read carefully and understand all INSTRUCTIONS before operating. Failure to follow the safety rules and other basic safety precautions may result in serious personal injury.

210mm

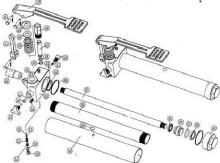
Part#	Description	Qty.	Part#	Description	Qty.
1	Ram Assembly	1	10	Left Frame	1
2	Bolt M10x115	1	11	Lock Pin with Chain	1
3	Flat Washer	1	12	Screw M8x20	4
4	Nut M16	1	13	Lock Washer	4
5	Roller Raceway	4	14	Flat Washer	4
6	Roller	2	15	Right Frame	1
7	Raceway Lock Screw	5	16	Hook	1
8	Lock Nut M12	4	17	Washer for hook	1
9	4" Swivel Caster	4	18	Nut for Hook	1
19	Foot Pedal	1	38	Rectangle Seal Ring	1
20	Pedal Pin	3	39	Release Valve	1
21	Connecting Rod	1	40	Tank Washer	2
22	Connecting Bolt	1	41	Ram	1
23	Spring Cover	1	42	Cylinder	1
24	Flat Washer	1	43	Oil plug	1
25	Spring	1	44	Tank	1
26	Pump	1	45	Y-Ring	1
27	Pump Core	1	46	Pinion	1
28	O-Ring	1	47	Pinion O-Ring	1
29	Back-up Ring	1	48	Bowl Seal Ring	1
30	Screw M10x1.25	1	49	Tank Nut	1
31	Small Spring	1	50	Steel Ball	1
32	Steel Ball	3	51	Steel Ball Seal	1
33	Cylinder Copper Washer	1	52	Safety Valve Spring	1
34	Ram Base	1	53	Safety Valve Screw	1
35	Copper Washer	1	54	O-Ring	1
36	Screw M8	2	55	Screw	1
37	Steel Ball	1			

Page 6 of 6

## 9" 12" VEHICLE POSITIONING JACK PARTS LIST



### RAM PARTS LIST



Page 1 of 6

### INTENDED USE

Single hydraulic vehicle jack maneuvers vehicle in any direction on 4 strong casters. Using 2 jacks permits full 180° vehicle pivot, using 4 jacks places vehicle on a 360° rotating platform.

### TECHNICAL SPECIFICATIONS & PACKING LIST

Item	Description
Size of wheel	4"
Construction	Aluminum
Width of handle	9" or 12"

### GENERAL SAFETY RULES

**WARNING:** Read and understand all instructions. Failure to follow all instructions listed below may result in electric shock, fire and/or serious injury.

**WARNING:** The warnings, cautions, and instructions discussed in this instruction manual cannot cover all possible conditions or situations that could occur. It must be understood by the operator that common sense and caution are factors which cannot be built into this product, but must be supplied by the operator.

### SAVE THESE INSTRUCTIONS

#### WORK AREA

- Keep work area clean, free of clutter and well lit. Cluttered and dark work areas can cause accidents.
- Keep children and bystanders away while operating this jack. Distractions can cause you to lose control, so visitors should remain at a safe distance from the work area.
- Be aware of all power lines, electrical circuits, water pipes and other mechanical hazards in your work area, particularly those hazards below the work surface hidden from the operator's view that may be unintentionally contacted and may cause personal harm or property damage.
- Be alert of your surroundings. Using jacks in confined work areas may put you dangerously close to cutting tools and rotating parts.

#### PERSONAL SAFETY

- Stay alert, watch what you are doing and use common sense when operating this jack. Do not use a jack while you are tired or under the influence of drugs, alcohol or medication. A moment of inattention while operating tools may result in serious personal injury.
- Dress properly. Do not wear loose clothing, dangling objects, or jewelry. Keep your hair, clothing and gloves away from moving parts. Loose clothes, jewelry or long hair can be caught in moving parts.

Page 2 of 6

- Use safety apparel and equipment. Use safety goggles or safety glasses with side shields which comply with current national standards, or when needed, a face shield. This applies to all persons in the work area. Also use non-skid safety shoes, handrail, gloves, dust collection systems, and hearing protection when appropriate.
- Do not overreach. Keep proper footing and balance at all times.

#### TOOL USE AND CARE

- Read all the instructions and warnings first before attempting to operate this jack.
- DO NOT operate jack on inclined surfaces. Jack must be used on level surfaces only. Unanticipated motion can occur as soon as jack lifts tire from surface.
- DO NOT overload jack beyond the load rating (1500 lbs. per unit).
- DO NOT start the vehicle's engine, or drive a vehicle while the jack is in use. Jacks are designed for hand maneuvering of vehicles only.
- DO NOT use jack to lift tires wider than 9 or 12 inches.
- DO NOT attempt to push jack over obstacles. Jack is designed to be used on level and smooth surfaces only.
- After lifting, be sure to always lock the pin in place before operating. Pull the pin out after finishing work and then release the valve.
- Do not force the tool. Tools do a better and safer job when used in the manner for which they are designed. Plan your work, and use the correct tool for the job.
- Store idle tools. When tools are not in use, store them in a dry, secure place out of the reach of children. Inspect tools for good working condition prior to storage and before re-use.
- Use only accessories that are recommended by the manufacturer for your model. Accessories that may be suitable for one tool may create a risk of injury when used on another tool.
- Keep guards in place and in working order.
- Never leave tool unattended.

#### OPERATION

- Place jack on floor and press down on the pedal to release pedal lock. Pull out the lock pin from frame.
- Before operation, open release valve by turning the hand-wheel counterclockwise. Expand the jack with the hand-wheel to place the rollers around the tire, position the jack so both rollers are in contact with the tire tread. To obtain the best control of the jack while expanding the rollers around the tire, place your left hand on top of the left side axle and place your right hand at the center of the pedal. Close the release valve by turning the hand-wheel clockwise to a snug tight position, jack may now be used.
- Install jack so that the unit is parallel to the sidewall of the tire to be lifted. Leave approximately 3/4" of clearance between tire and jack. This is very important. If unit is misaligned, the tire may hit the axle of the jack and not the rollers, this may damage the jack and void the warranty.
- To lift tire, flip the directional lever up, then place foot on pedal, depressing the pedal with smooth, even strokes. Cycle pedal until tire is lifted from surface one inch or less. After lifting, the lower the tire is to the ground the more stable jack will be. After lifting, be sure to always lock the pin in place before operation. If using more than one jack, repeat

Page 3 of 6

process on the other tires and maneuver the vehicles as required.

- To release jack, pull the pin out from the frame and open the valve by turning the hand-wheel counterclockwise slowly. Jack may be removed when rollers disengage from the tire.

#### MAINTENANCE

- Maintain your jack. It is recommended that the general condition of any jack be examined before it is used. Keep your tools in good repair by adopting a program of conscientious repair and maintenance. Have necessary repairs made by qualified service personnel.
- Cleaning. Use only soap and a damp cloth to clean your jack. Many household cleaners are harmful to plastics and other insulation.

Page 4 of 6