

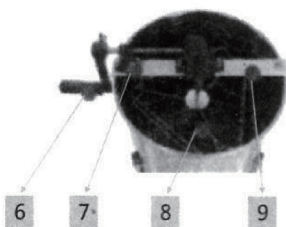
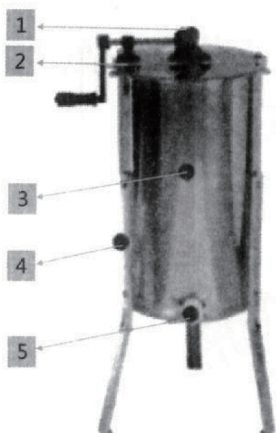
2/3/4 FRAME ELECTRICAL HONEY EXTRACTOR

EX-02SE/EX-03SE/EX-04SE



USER MANUAL

1: Structure



- 1-gear box 2-lid 3-barrel
4-Leg 5-honey gate 6-handle
7-holder 8-Basket 9-Beam

Notes: small parts like bolts and nuts
are not showed here.

2: Specifications

Name (Item No.)	Material of Basket	Material of Barrel	Honey Gate	Dimensions (L*W*H)	Weight (kg)
2-frame manual honey extractor (EX-02SE)	201/304 stainless steel	201/304 stainless steel	plastic honey gate	44*44*75cm	12.5
3-frame manual honey extractor (EX-03SE)	201/304 stainless steel	201/304 stainless steel	plastic honey gate	44*44*75cm	13
4-frame manual honey extractor (EX-04SE)	201/304 stainless steel	201/304 stainless steel	plastic honey gate	52*52*77cm	14.6

Notes: The specifications of the actual product are subject to the customer's requirements.

3: Accessories

No.	Name	Quantity	Notes
1	main body of extractor	1set	all assembled except lids, legs, honey gate and handle .
2	acrylic lid	2pcs	unassembled
3	leg	3pcs	unassembled
4	handle	1pc	unassembled
5	plastic honey gate	1pc	unassembled
6	bolt (M8X16)	6pcs	unassembled for fixing the legs

Notes: It does not contain Item 2 if lids are requested to be assembled at factory by customer.

4: Assembly Instructions

4.1 Preparations

Take out of the device from the carton carefully. Remove the protective bag and clean it up by detergent and water before first use. The extractor should be placed on flat floor to be dried.



Caution: sharp edges!!

4.2 Assembly

4.2.1 Assembling the legs:

assembling the legs to the barrel with bolts M8X16 and screw them down.

4.2.2 Assembling the honey gate:

put the gate from outside of the barrel into The pre-drilled hole and tighten it up with the hex nut from inside of the barrel.

4.2.3 Assembling the handle:

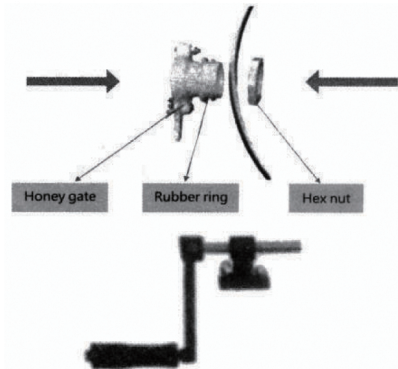
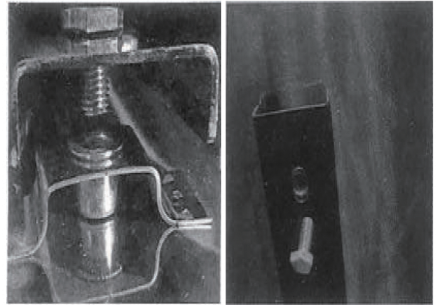
get the hole of the handle to be inserted by the drive axle of the gear, and screw down the bolts once they are in a matched position.

4.2.4 Keeping the device in place:

use the expansion screws or other methods by yourself to fix the entire device to the working ground.

4.2.4 Rotating the inner basket by

hand slightly to see if it works properly.



Keep the manual in a safe and dry place for future references.

If you don't understand the above instructions or have any questions about the safety of assembling the device, please call a technician. Check carefully to make sure there are no missing or defective parts. Improper assembly may result in damage or serious injury. Do not use the device for any purposes not specified here. We are not responsible for any damage or injury caused by improper assembly, installation or use.

5: Operation instructions

Step 1: Put the bee frames (honeycombs) into the frame holder of the inner basket. Put either two honeycombs at the opposite side or more honeycombs to ensure the balance while in operation.

Step 2: Close the lids.

Step 3: Once the barrel is fixed well to the ground (by fixing the hole of the legs to the ground), rotate the handle to drive the basket.

Once the extraction is done, stop the rotation with the handle, and make sure the operator is safe. (no touch of the handle by the operator). When the inner basket stops to rotate, open the lid and check the honey left in the honeycomb. If there is still honey left in the honeycomb, repeat Step 2&3; If there is no honey in the honeycomb, proceed to next step;

Step 4: Take the honeycomb out of the barrel, flip it to the other side and put it back to the basket. Repeat Step 2&3 until the honey is entirely extracted.

Step 5: Place a bucket or other container under the honey gate. Open the honey gate and the honey will drop to the bucket or other container. At the final stage, tilt the barrel to ensure the honey flows out completely.



Warning: Do not open the lid while in operation to avoid injury.

6: Maintenance and Upkeep

6.1 Maintenance

6.1.1 Prompt cleaning

Option 1: Please use water to clean the honey extractor and discharge all the water to avoid rust.

Option 2: Place the extractor with lids open next to a beehive. The bees will clean it up.

6.1.2 Deep cleaning

Take the device apart (Refer to the disassembly instruction). Use the detergent and water to wash the inner basket and spare parts. After they are dried, put them together again.

6.2 Upkeep

Put the extractor in a dry place when not in use. Though the stainless steel is highly anti-rust and anti-corrosion, rusty spot may appear on surface once exposed to a wet environment.

If rusty spot appears on surface, remove it with light abrasive material;

If there is any abnormal noise in operation, lubricate all bearings with food-safety grease or oil, and clean it up;

If the roller bearing in the shaft does not rotate freely, lubricate it with light grease (such as white lithium) or oil;

No maintenance of gear box is required, as it is always sealed.

6.3 Disassembly instruction

Remove four cap-like nuts on both sides of the beam (two at each side), and pull out the beam and take out the whole inner basket. Then take good care of the tiny steel ball which is used to support the inner basket.

7: After-sales Services

One-year warranty (since delivered from factory) is provided. Please feel free to contact us if there is any problem with the product.