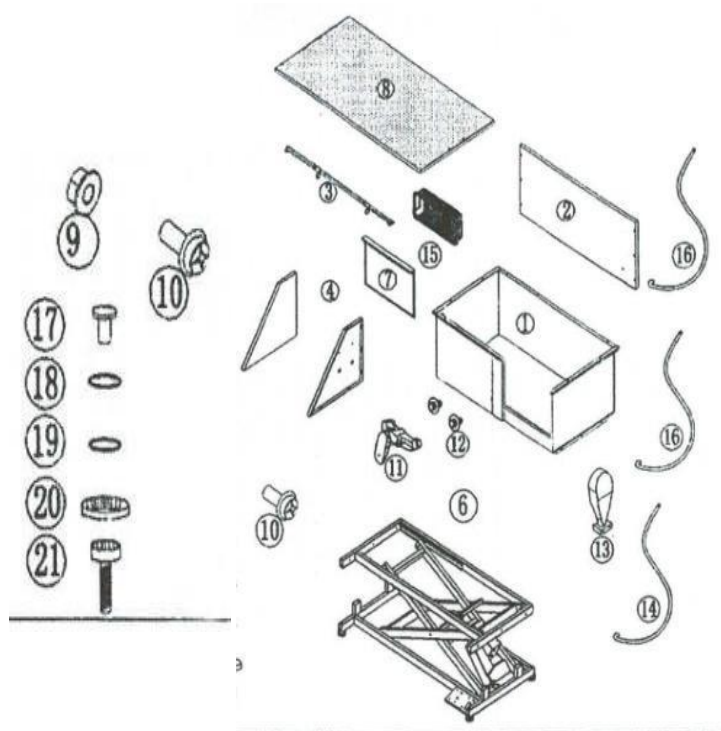


# Installation instructions for pet bathtub

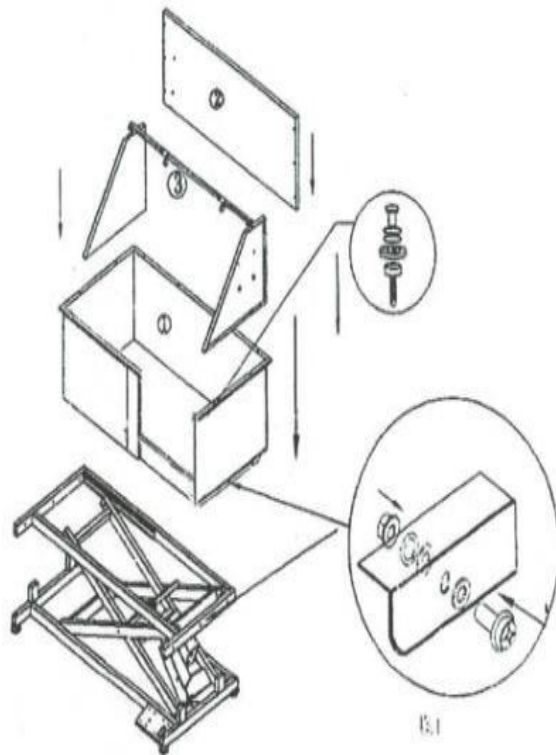
## Parts list

- 1 bathtub cabinet
- 2 bathtub tailgate
- 3 the boom
- 4 bathtub left and right baffles
- Electric lifting base
- Door plank of 7
- 8 the pedal
- 9 M8 hexagon nuts
- 10 M8 head screw
- 11 the faucet
- 12 connector
- 13 flower is aspersed
- 14 shower hose
- 15 soap box
- 16 inlet hose
- 17 water leakage
- 18 cushions
- 19 rubber washer
- 20 plastic retaining ring
- 21 outlet



## Assembly instructions

1. As shown in the figure, place the bathtub cabinet body on the lifting chassis correctly, and lock the cabinet body with the chassis with bolts (as shown in the figure).
- 2 put the sponge cushion into the hole at the bottom of the bathtub together with the water leakage and put the rubber washer (threaded side down) from the bottom of the bathtub box. Plug in the water leakage and tighten it with the plastic fixing ring. Finally connect the outlet hose and tighten the screws on the hose to prevent it from falling off.
3. Place the left and right baffles and the back baffle sponge MATS on the upper part of the box body and fix them with bolts.
4. Place the horizontal bar on the assembled left and right side plates to align with the hole position and tighten it with bolts.



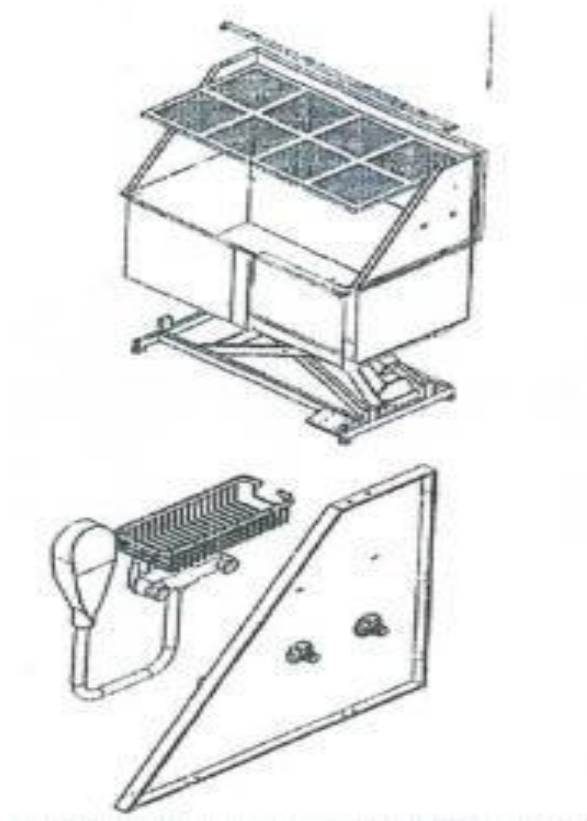
Place the pedals into the tub cabinet

Bolt the soap box onto the two long waist holes on the right panel and adjust the position to lock the bolt

Pass the tap inlet through two large round holes in the side plate and screw the adapter on the other side of the side plate

Connect the two ends of the hose respectively on the faucet outlet and the sprinkler inlet, then tighten the sprinkler card into the sprinkler rack

Connect the two inlet pipes to the other side of the adapter and tighten by the screwdriver wrench for preventing water leakage



Pay special attention to avoid corrosive things to contact box, such as acids, bases, and salts.

