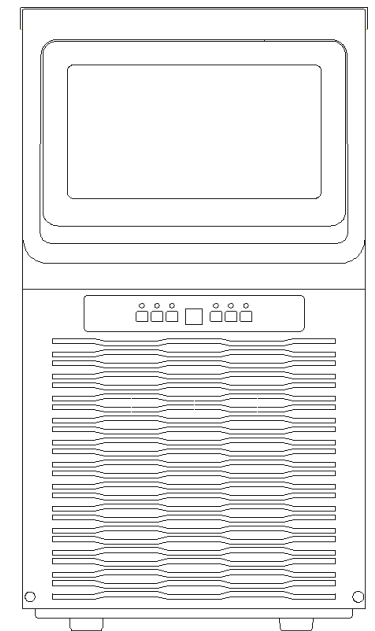


VEVOR®

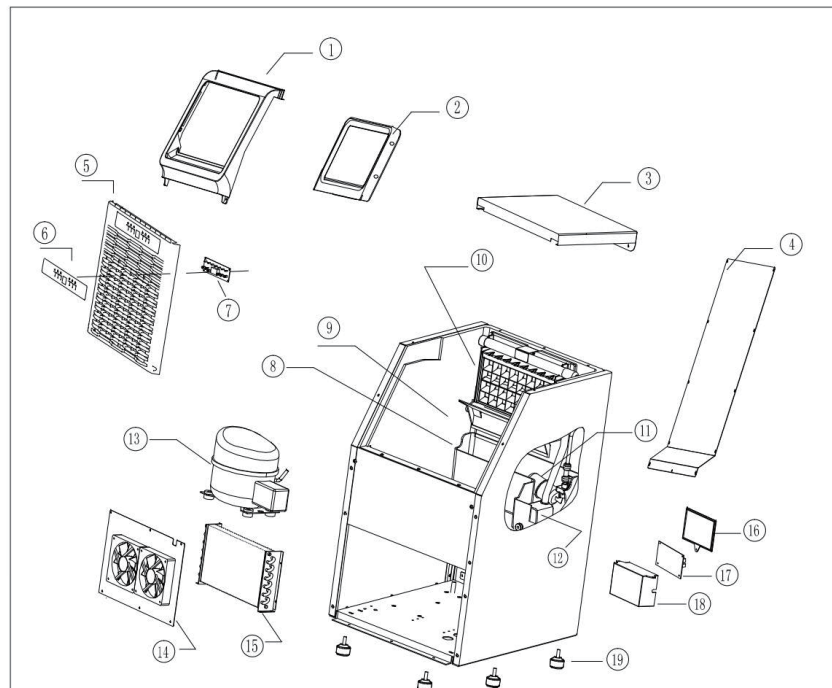
ICE MAKER TKJ-AT25F



Product pictures are subject to actual.

E-mail: support@vevor.com

Explosion diagram



- | | | |
|---------------|-----------------|-------------------|
| 1.Door | 7.Display board | 13.Compressor |
| 2.Door frame | 8.Inner tank | 14.DC fan |
| 3.Top cover | 9.Water tank | 15.Condenser |
| 4.Back panel | 10.Ice mold | 16.Main board |
| 5.Front panel | 11.Float | 17.Main board box |
| 6.Front plate | 12.Pump | 18.Rubber feet |

IMPORTANT SAFETY INSTRUCTIONS

When using electrical appliances, basic safety precautions should be followed to reduce the risk of fire, electric shock, and injury to persons or property. Read all instructions before operating the machine for the first time.

CAUTION: ICE CAN'T BE STORED IN THE ICE BIN DURING NIGHT-TIME, IT'S NOT FRIDGE, ICE WILL BE MELTED TO WATER AND FLOW OUT OF THE MACHINE.

1. If connect with water supply, **CAUTION:** must connect the potable water supply;
2. The machine is intended to be used in household and similar applications such as:
 - staff kitchen areas in shops, offices, and other working environments;
 - farmhouses
 - by clients in hotels, motels, and other residential type environments;
 - Catering industry and similar industries.
3. The machine should be used indoors and without obstacles surrounded good ventilation place. There is must be 50cm at least between the four sides of the machine with the wall.
4. When using electrical appliances, basic safety precautions should be followed to reduce the risk of fire, electric shock, and injury to persons or property. Read all instructions before using any appliance.
5. Don't operate this or any other appliance with a damaged cord.
6. Connect to properly polarized outlets only. No other appliance should be plugged into the same outlet. Be sure that the plug is fully inserted into the socket.
7. Don't place the machine and power cord near flammable material. Do not cover the cord. Do not submerge it in water.
8. We do not recommend the use of an extension cord, as it may overheat and become a risk of fire.
9. Unplug the ice maker before cleaning or making any repairs or servicing.
10. Exercise caution and supervision when the appliance is used near children.
11. Don't use your ice maker outdoors. Avoid direct sunlight and make sure that there is at least 5 inches of space between the back and sides of your unit and the wall.
12. Don't use any liquid other than water in the unit to make the ice.
13. Do not clean your ice maker with flammable detergents. The fumes can create a fire hazard or explosion.
14. Do not tip the machine over.
15. If the ice maker is brought indoors from outdoors during the wintertime, give it a few hours to warm up to room temperature before plugging into the power source.

16. This unit should be properly grounded for your safety. The power cord is equipped with a three-prong plug mated with standard three-prong wall outlets to minimize the possibility of electric shock.
17. Plug your appliance into a dedicated, properly installed, and grounded wall outlet. Do not, under any circumstance power and /or grounding should be directed toward a certified electrician.
18. The foaming materials inside are combustible which must be kept away from fire.
19. It's forbidden to pull the cable to unplug the plug, pull the plug is a must.

IMPORTANT: To avoid hazards due to instability, the unit must be placed on an even and flat surface.

WARNING: This appliance must be grounded.

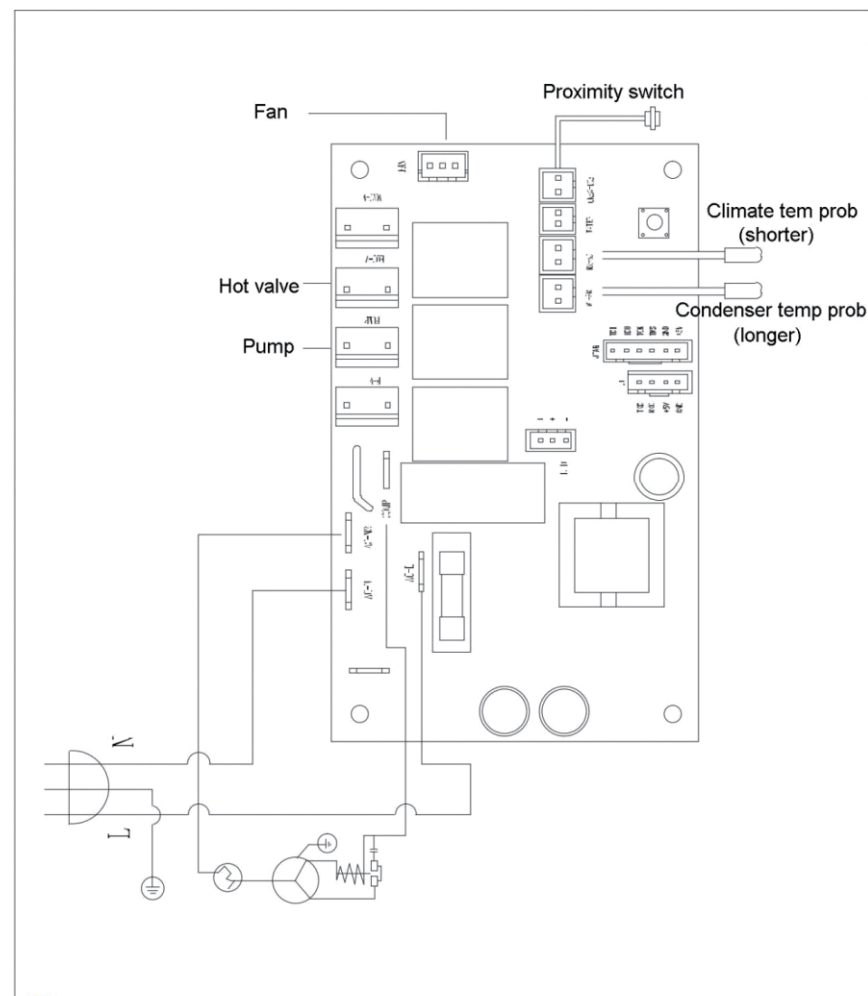


Warning:
Combustible
materials

- 1) The fuse on the PCB is 15A, if change, must be operated by a technician.
- 2) Voltage fluctuation can't be exceeded $\pm 10\%$ than the rated voltage, or a Voltage stabilizer is needed.
- 3) In addition to the method recommended by the manufacturer, mechanical equipment or other methods must not be used to accelerate the defrosting process, and the refrigeration system must not be damaged.
- 4) The refrigeration system contains high-pressure refrigerant, and the refrigeration system must not be damaged. Be especially careful when installing and moving. Installation and maintenance must be performed by the manufacturer or professional. Scrap must be disposed of by the designated recycling department.
- 5) There are heat insulation materials in the appliance, which are combustible materials, and must be kept away from fire sources. Repairs must be performed by the manufacturer or professionals. Scrap must be disposed of by the designated recycling department.

IMPORTANT: To avoid hazards due to instability, the unit must be placed on an even and flat surface.

Circuit Diagram



4. After the Self-Clean program is completed, unplug the power cord and drain out the water by unplugging the drain cap on the side. Replace drain cap.
5. Add fresh water to the water reservoir, up to the water level mark.
6. Plug the unit and repeat the Self-Clean process by repeating steps 3 to 5. This will rinse out the vinegar/lemon residue.
7. After draining the water, replace and tighten drain cap.
8. Dry the interior and exterior with a clean, soft cloth.

NOTE: It is strongly recommended to clean the unit before initial use or after the unit has not been in use for a long period of time.

2) Long-term storage of the ice maker

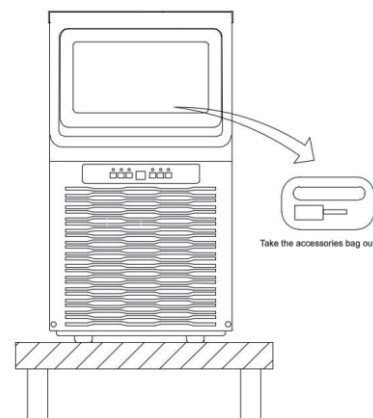
- a) Unplug the power plug to cut off the power supply;
- b) Turn off the water supply and remove the water inlet pipe;
- c) Remove all ice cubes and drain the water ;
- d) Wash and dry the inner walls of the storage tank and water tank.

Common malfunction analysis

E1	Ice full indicator is on, and proximity switch didn't react	Evaporator connector didn't assemble well	Re-install the connector
		Proximity switch is not sensitive	Replace the switch
E2	Normal to make ice	The connector didn't return to original position	Take away the ice to make the connector return to original position
		Stop every 4 cycles, and the process of ice drop continued for 5 min	Proximity switch is not sensitive, replace it
	No water in the tank	The water tank is not plugged	Put the plug back
		Use tap water as water source	Check the water supply
E2	No water in the tank	Use tap water as water source	Water pressure is too high, water float can't work. Adjust the water pressure or replace by a new one.
		No water or low flow	Pump is badly clogged up, replace or clean it
	Water in the tank	The spray pipe is clogged up, clean it	
		Thin ice on the evaporator	Increase the making time through "+"
	Water flow and water get cool	very solid ice on the evaporator	Reduce the making time through "-"
		Some water sprayed to ice storage tank	Adjust the spray pipe
	Water flow down but water is not cool	The water leak from the back of water tank	The tank need to be adjusted.
		The main board didn't supply electricity to compressor	Replace by a new main board
		Compressor didn't work	Check the starter, replace by a new one if needed
		Compressor is very hot	Replace
E3	The fan is not work	Compressor work but the connected copper pipe didn't get cool	The compressor leak
		The condenser prob is not sensitive	Unplug the prob or replace by a new one
		The fan is jammed	Adjust the fan
E4	Ice full	Fan is broken	Replace by a new fan
		The connector didn't return to original position	Take away the ice to make the connector return to original position

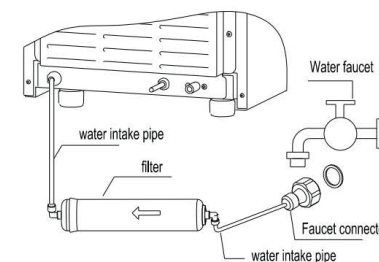
Installation and connection

1. Place the machine on a flat place.



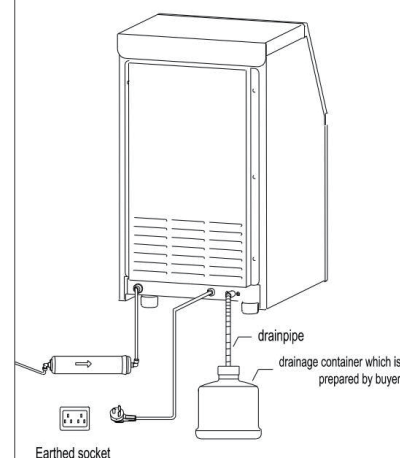
2. Ways of adding water

Use water faucet as water source

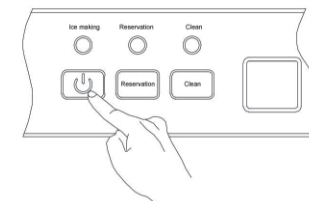
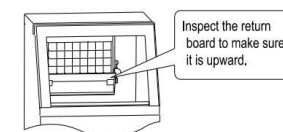


Connect to faucet

3. Connect to drainpipe Plug into the socket



4. Make ice



Press the ON/OFF button to start the machine

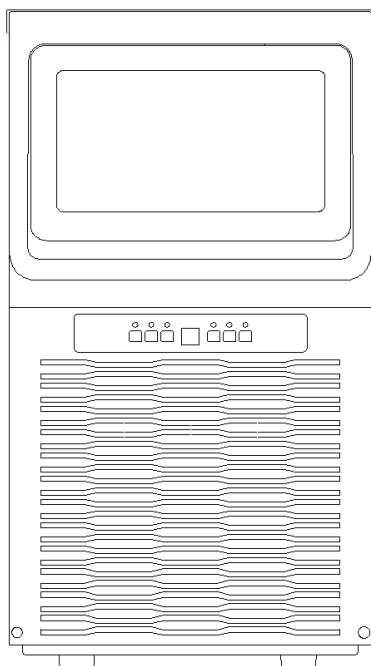
Note: The installation must be carried out by professionals according to the instructions.

UNPACKING YOUR ICE MAKER

1. Remove all exterior and interior packaging materials. Check whether all the below accessories are included or not. If any parts are missing, please contact our customer service. After you unpack the machine, we recommend you to leaving it for 24 hours before turning it on.
2. Clean the interior with lukewarm water and a soft cloth or clean the unit using the Self-Clean function.
3. Find a location for your ice maker where it's protected from direct sunlight and other sources of heat (i.e. stove, furnace, radiator). Place the ice maker on a level surface. Make sure that there is at least 5 inches of space between the back and sides of your ice maker and the wall.
4. Allow one hour for the refrigerant to settle before plugging the unit for initial use.
5. The appliance must be positioned where the plug is accessible.

Package Contents

Ice maker machine x 1



Warning:

1. **The appliance is used to make ice cubes and store ice temporarily . please follow the following principles to keep the ice cubes clean:**

Wash your hands before taking out the ice cubes and use the plastic ice scoop provided to take ice.

Except ice cubes, please do not put anything else in the machine.

Clean the storage tank before use. Keep the ice scoop clean and use a neutral detergent to clean it. Close the door after taking ice to prevent dust.

2. **The use of any electrical appliances must follow basic guidelines, especially:**

- A high humidity environment will increase the risk of short circuit or electric shock. If in doubt, please cut off the power of the machine.
- Please do not pull the power cord directly to turn off the machine.
- Without adult supervision, the ice maker cannot be used alone by children or the elderly.

CLEANING & MAINTENANCE

Please thoroughly clean your ice maker before initial use.

1) Cleaning of internal and external parts

Note: Unplug the power plug before doing any cleaning or maintenance procedures. Clean the condenser at least once a year, so that the ice maker can work better.

Do not use alcohol to clean the ice machine, as this may cause the plastic to crack.

a) External

Use a clean soft cloth to wipe the ice machine at least once a week, and then use a soft cloth with a neutral detergent to remove grease or other impurities.

b) Ice scoop cleaning (weekly)

Dip the ice scoop in a mixture of neutral detergent and water for at least 3 minutes, then rinse with water.

c) Storage tank cleaning (weekly)

Open the ice door and remove all ice cubes.

Use a neutral detergent to clean the inner wall of the tank, and then rinse with water. Wipe the inner wall with a cloth with neutral detergent, rinse with water, and finally dry the inner surface with another clean cloth.

d) Water pump cleaning (weekly)

The water pump must be cleaned once a week. Before cleaning, unplug the power plug, then take out the water pump, clean the water inlet of the pump with a small brush, and

INTERIOR: please use the following Self-Clean function:

1. Add water and vinegar or lemon juice mix (1:1 ratio)
2. Plug in unit, press and hold the CLEAN button for approximately 3 seconds, then release. The unit will automatically enter Self-clean program. This process takes about 5-6 minutes. When the Self-Clean program is finished, unit will automatically power off.
3. The fan blade will be rotating. This process rinses the inside parts several times.

Reservation button:

Press this button under standby mode with the reservation indicator Flicker, and the “+”/“-” button to set the auto-turning-on time (in hours from 0-24h). The machine will automatically turns on after The countdown is finished, and the “+”/“-” button to set the auto-turning-off time (in hours from 0-24h). The machine will automatically turns off after the countdown is finished. If we succeed in reservation, the reservation light will be always on. Press reservation button to cancel the reservation and the reservation indicator will be off.

Clean button:

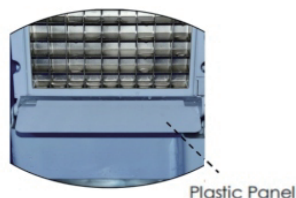
Press this button for 1s under standby mode to make the enter cleaning mode for 5min and with cleaning indicator is on. And it will enter standby mode after cleaning. Press cleaning button during cleaning mode to make the machine end the cleaning in advance.

Indicator instruction

1. Ice making indicator: The indicator is always on when the machine is making ice. Or it's on together with ice full indicator, which means the ice is full.
2. Reservation indicator: The indicator is always on when set the auto-power-on or auto-power-off time, and will be off when the reservation time is up.
3. Clean indicator: The indicator is always on when the machine is under the clean mode, and will be off after cleaning.
4. Light indicator: When the inner blue light is on, the indicator is always on, vice versa.
5. Ice full indicator: When the ice is full, the indicator will be always on. Stoppage indicator: The indicator will be on with E1/E2/E3 shown on the display board. Refer to the Common malfunction analysis for details.

Special instruction:

1. The machine will detect the around ambient temperature and set the ice making time automatically.
2. The system will get to normal after 3 cycles.
3. The user can choose their desired size through “+” and “-” button.
4. As the production of ice cubes increases, the plastic panel inside the machine (shown above) might be pressed down by the ice cubes. When the plastic panel is pressed down, the machine will stop producing ice cubes automatically and the “stoppage” indicator will light on. Please clean out the ice cubes regularly for continuation of ice making.



Warm Tips: Check whether all below accessories are included.

Accessories list (Please be subject to the actual products)				
NO	Description	Picture	Usage	QTY
1	Manual		Operation manual	1PC
2	Filter		Filter water	1PC
3	Drainage pipe		Drain	1PC
4	Ice spoon		Take ice cubes	1PC
5	nylon cable ties		Fix pipe if needed	2PCS
6	Hoop		fasten the outlet and the drainage pipe together if needed	1PC
7	Seal ring		Do put one in the faucet of the intake pipe, the other one is spare.	2PCS
8	Spare blue clip		Spare blue clip if needed.	2PCS
9	Spare plug		Spare plug which plug the tank if needed.	1PC

The place of installation

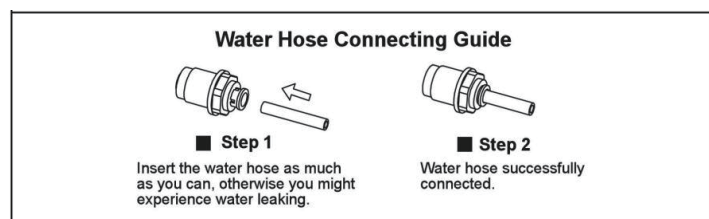
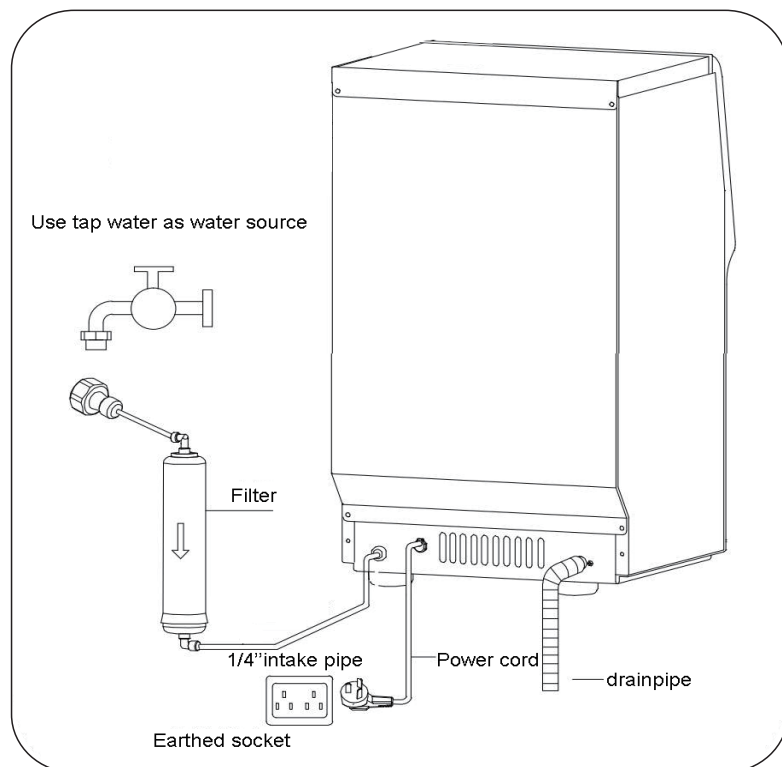
- a) The appliance should be placed in a clean place with good ventilation, which should be kept from sunlight and rain.
- b) The machine cannot be placed near any heat source.
- c) The ambient temperature around should not be lower than 3°C, not higher than 40°C, and there must be 15cm at least between the four sides of the machine with the wall.
- d) The machine should be placed in a flat place.
- e) Do not place anything on top of the appliance.

Connect drainage pipe and water intake pipe

- Warning:**
- 1) The machine can only connect with drinking water sources, and must meet local drinking water standards
 - 2) The water pressure must be in 0.1-0.4Mpa, if exceed 0.4Mpa, a pressure reducing valve must be connected.
 - 3) Drainage: The outlet of the drainage pipe must be lower than the outlet on the machine

CONNECTING WITH WATER

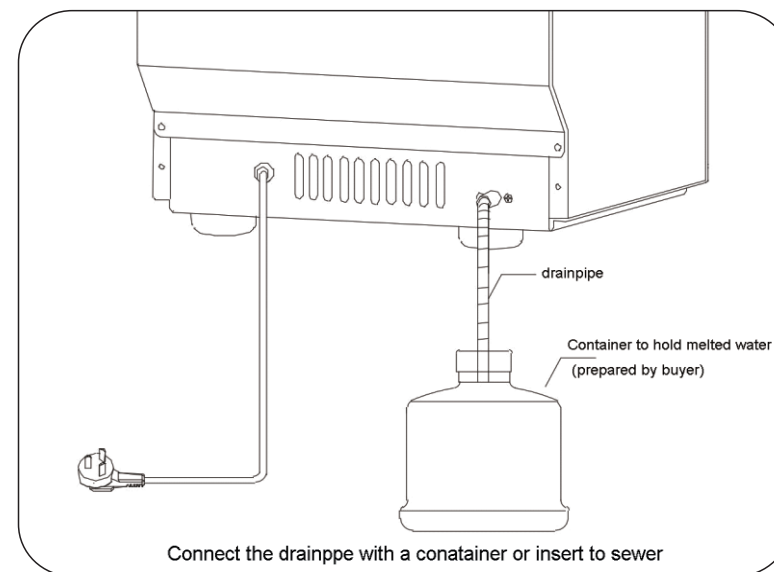
Please connect your ice maker with other parts by referring the diagram below.



Drain.

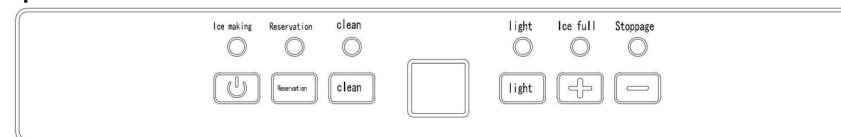
Warning: Because the ice in the inner tank will melt, drain pipe must be connected before using, and insert the drain pipe into a container or into the sewer.

Note: Connect one end of the drain pipe to the machine, and the other end to a container or sewer. The other end of the drain pipe must be lower than the drain port of the machine.



MACHINE OPERATIONS

Operation Panel



ON/OFF BUTTON:

Press this button under standby mode (display "--") to make the machine to work, press the button for 2 seconds during working time, the machine will be power off.

"+" / "-" BUTTON

1) Adjust ice making time:

Through "+" / "-" to increase or decrease ice making time, which will be effected at the current cycle. Press "+" button, if the screen display "1", means ice making time will be added 1 min, max time can be added 8 min. If press "-" button and display "-1", means ice making time will be decreased 1 min, the max time is 5 min. That means the time can be adjusted from -5 to 8 min.

2) Set auto-turn-off / auto-turn-on time

Light button:

Press this button to turn off the blue light, press again to turn it on.

Notes: The surrounding environmental temperature will influence the time needed for ice making.