

Tabletop Prize Wheel

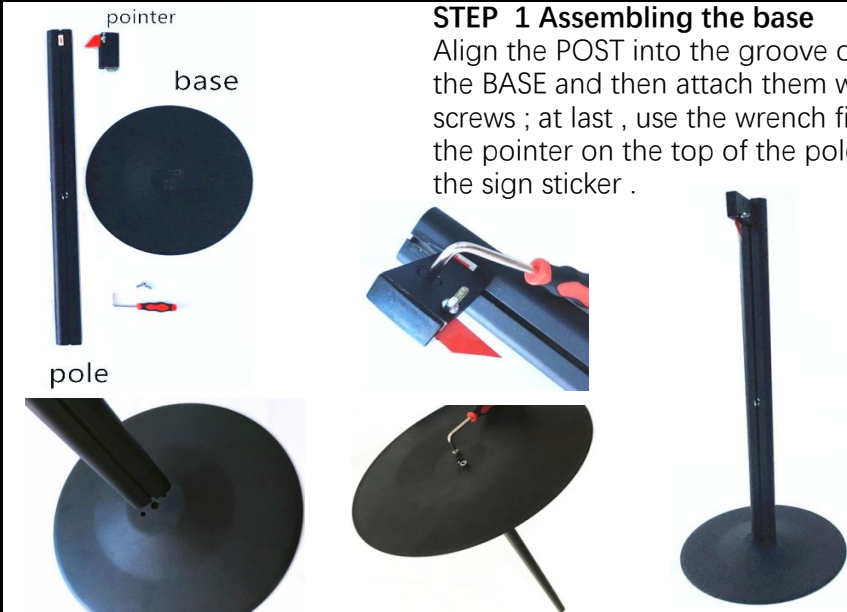
Package Content



Assembly Instruction

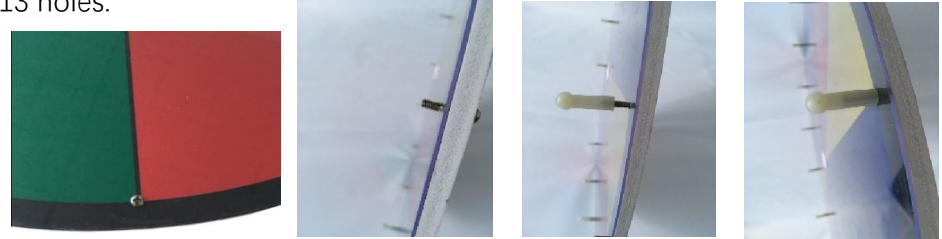
STEP 1 Assembling the base

Align the POST into the groove of the BASE and then attach them with screws ; at last , use the wrench fixed the pointer on the top of the pole as the sign sticker .



STEP 2 Assembling the WHEEL

Remove the four small screws which are assembled on the WHEEL primarily at first . Afterwards , insert one screw into the back of the WHEEL and cover it with the plastic sleeve on the front . Repeat this step to assemble the rest 13 holes.



STEP 3 Attaching the WHEEL to the BASE

The last step, attach the WHEEL to the base with the screw and its matched washer and wing nut . Attached the logo in front of the wheel .



Your Tabletop Prize Wheel is now is assembled and ready for USE !!