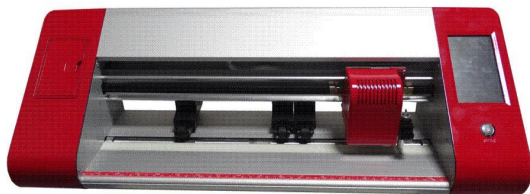


Operation Manual



CUTTING PLOTTER

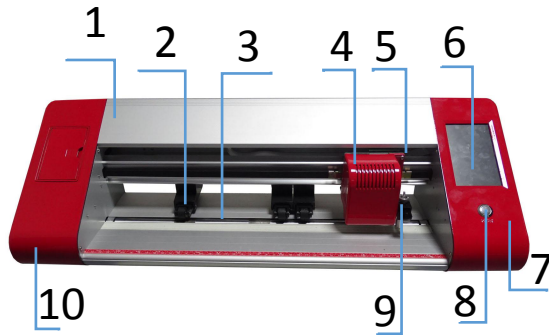
Contents

I .Precautions.....	2
II . Introduction for main parts.....	3
III. Technical parameters.....	4-5
IV. Control buttons description and operation instructions.	6
V . Blade assembly.....	7-8
VI. Software and driver installation.....	9-11
VII. Connection of software and machine.....	12-16

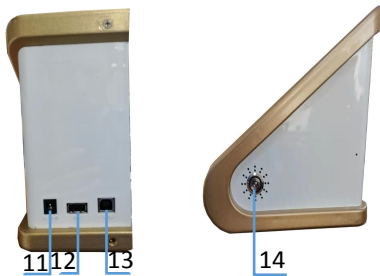
I .Precautions

1. Protective material must be removed before turning on the cutting plotter.
2. Check the label on the back side of the plotter to confirm that the rated voltage required by the plotter matches the voltage of the power base.
3. Firstly make sure that the power switch is off, then plug the power supply into grounded power outlet.
4. Please do not touch the power cord with wet hands to avoid electric shock.
5. Please only use the power cord, data cable provided with this product, or manufacturer-approved replacements.
6. Please do not drop metal objects and liquids into the machine to avoid malfunction.
7. After shutting down, you must wait another 5 seconds to turn on the cutting plotter again, otherwise it will cause damage to the cutting plotter.
8. In thunderstorms, turn the power switch to OFF and unplug the power cord.
9. Please do not privately change the manufacturer's components.
10. Manufacturer reserves the right to change product specifications without prior notice.
11. The manufacturer only bears the legal obligations of the product itself sold to the users, and does not bear other losses caused by the malfunction of the products.
12. Without our company's permit, no part of this manual can be copied or transmitted in any name.

II . Introduction for main parts



1.Cover for rail guide	2. Pinch roller kit
3. Roller for feeding paper	4. Carriage
5. Reset switch	6. Touch screen
7. The right cover	8. Reset switch
9. Blade clamp	10. The left cover



11.Power connection
12.U-disk port
13.USB port
14.The power switch

Left side

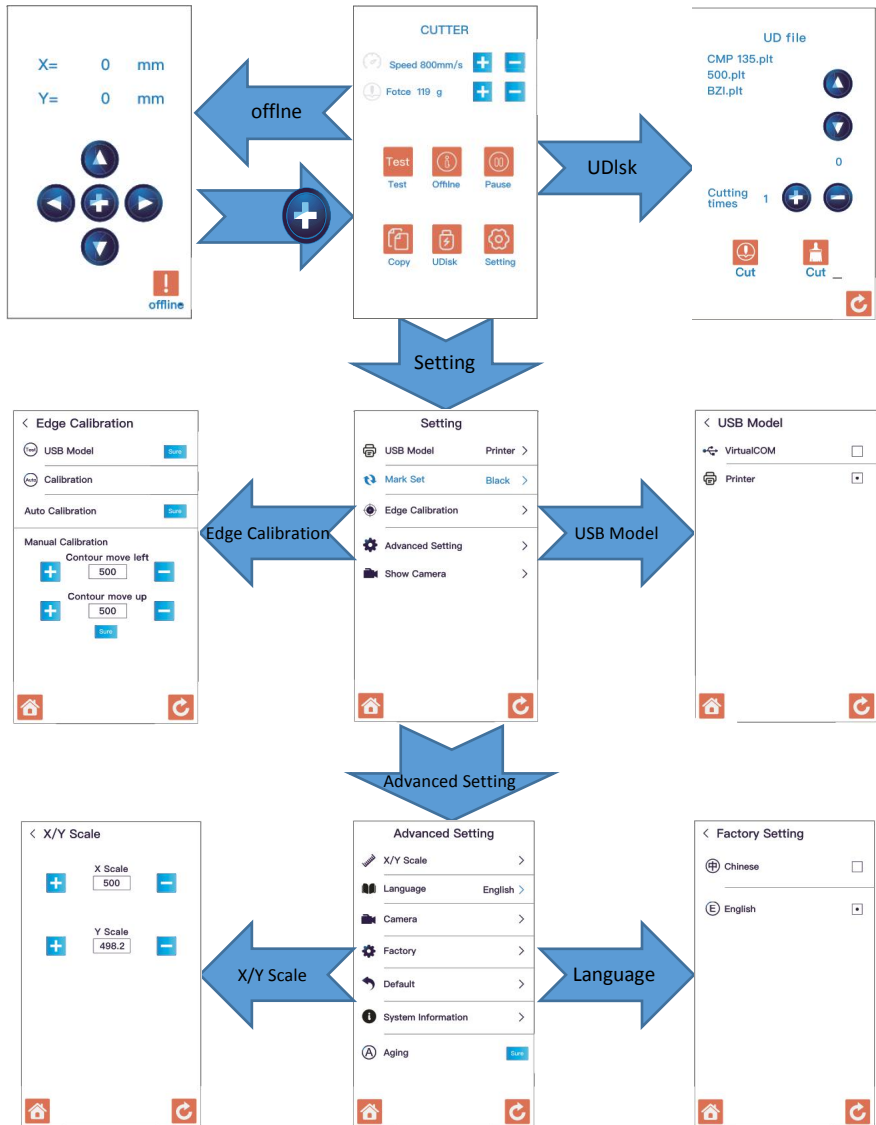
III. Technical parameters

Item \ Model	TT450
Max. feeding width	450mm
Max. cutting width	345mm
Cutting thickness	≤1mm
Speed/Pressure	5-800mm/s 5-500g
Buffer	1-4M
LCD display	CN/EN
Real-time Speed adjusting	Support
Interface	USB+U-DISK
Re-cutting function	Support
Re-cutting accuracy	0.127mm
Resolution Ratio	0.0245mm/step
Language format	HPGL
Voltage	AC100-240V

Accessory box

	Item	Quantity	Unit
1	Cutting plotter	1	Set
2	Power supply cable	1	Pc
3	Blade	1	Box
4	Blade holder	1	Pc
5	Pen holder	1	Pc
6	Ball pen core	1	Pc
7	USB cable	1	Pc
8	USB driver	1	Pc
To protect the machine, use only the accessories in this accessory box			

IV. Control buttons description and operation instructions



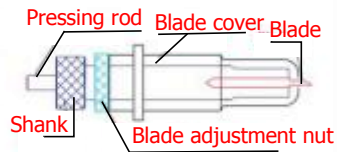
VI. Blade assembly

1). Assembly the blade into holder, see as below:

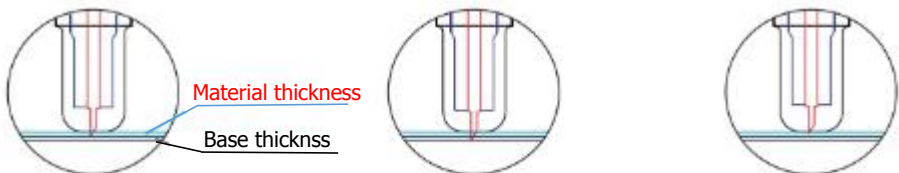
(Appearance view)



(Exploded view)



2). Loosen the blade adjustment nut and rotate the shank to adjust the length of the exposed blade tip. Determine the tip length according to the thickness of the material.



Correct

Blade tip is too long

Blade tip is too short

1) Press the pressing rod when you want to change blade. Take out the blade when it is exposed.

2) Assembly the blade holder into wagon:

a, Loosen the fixed screw on tool holder

b, Put the blade holder into tool holder

c, Tighten and fix the blade holder when it arrives to correct position

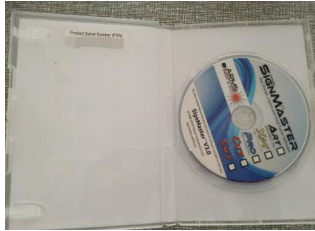


Tips:

Do not touch the blade tip by finger, otherwise, your finger will be injured and the tip will be blunt.

VII. Software and driver installation

1. Open the software box (pic 1), take the disk and put it into CD optical drive (pic 2)

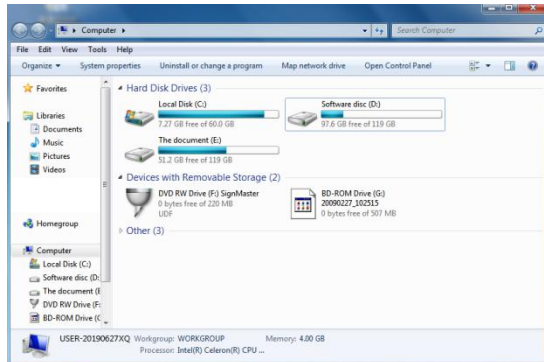


(pic 1)



(pic 2)

2. Open the computer, double click or right click optical drive to install the software. (pic 3)



(pic 3)

3. After opening optical drive, click Install Software (pic 4)

Click on the icon in the red box

Select the language



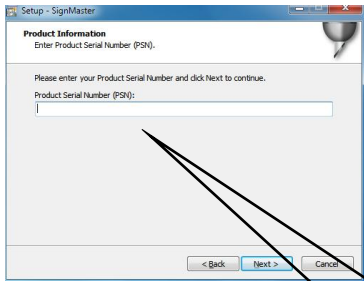
(pic 4-1)



(pic 4-2)

Enter the PSN code

Agree to click next



(pic 4-4)

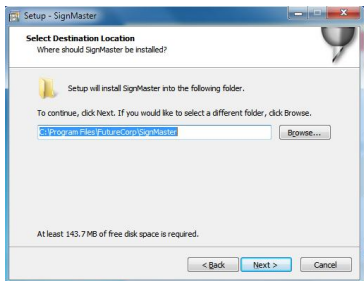


(pic 4-3)

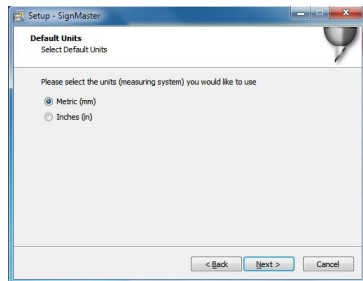
PSN code can be found at left side of opened software box.

Default installation path, click next

Select the unit

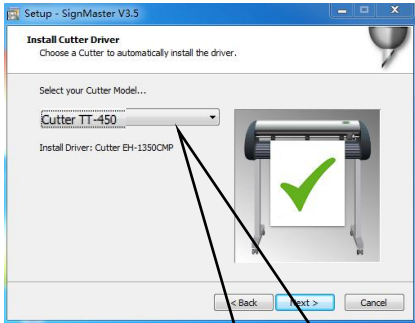


(pic 4-5)



(pic 4-6)

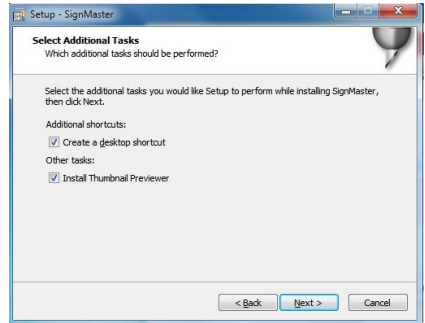
Select machine model



(pic 4-7)

The selected machine model can be viewed in the label above the machine power socket

Next



(pic 4-8)

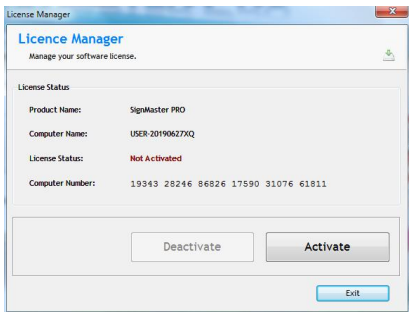
The installation is complete

This activation window appears when you open the software



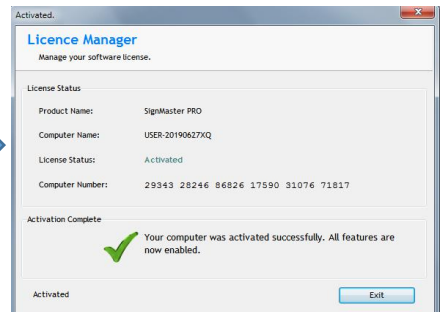
(pic 4-10)

Click activate and enter your email twice



(pic 4-11)

Activation successful, exit

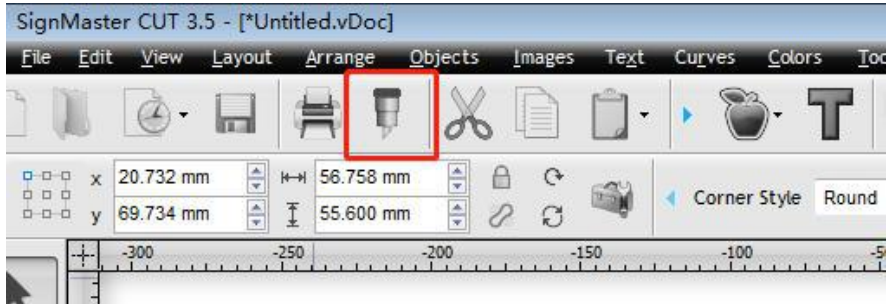


(pic 4-12)

VIII. Connection of software and machine

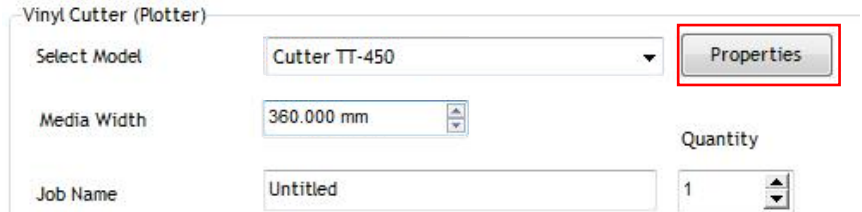
1. Open the software, select cut content, and click send to the cutting plotter

Click the carving knife icon in the red box



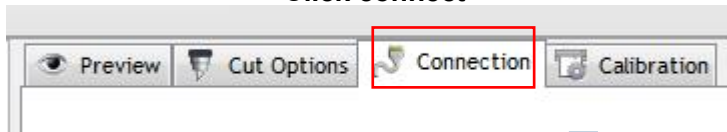
(pic 5-1)

Click properties



(pic 5-2)

Click connect



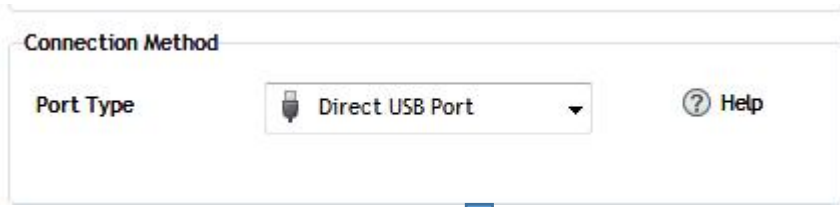
(pic 5-3)

Select machine model



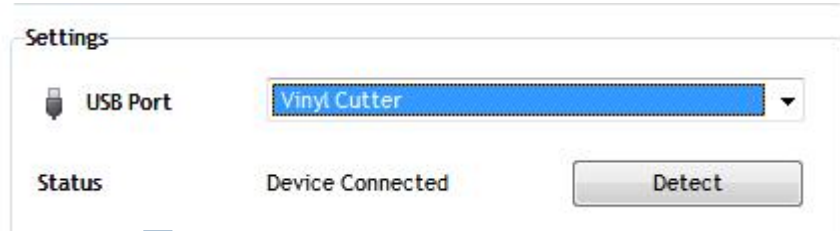
(pic 5-4)

Select Direct USB Port



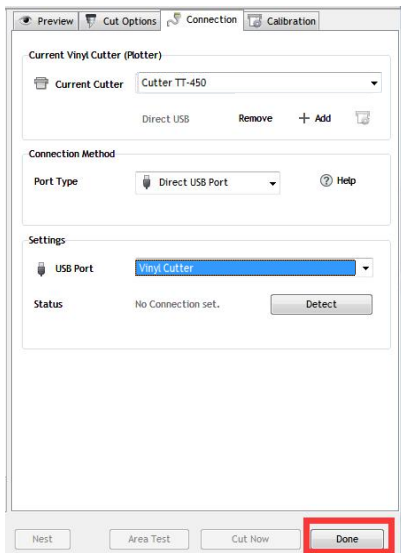
(pic 5-5)

Drop-down select driver



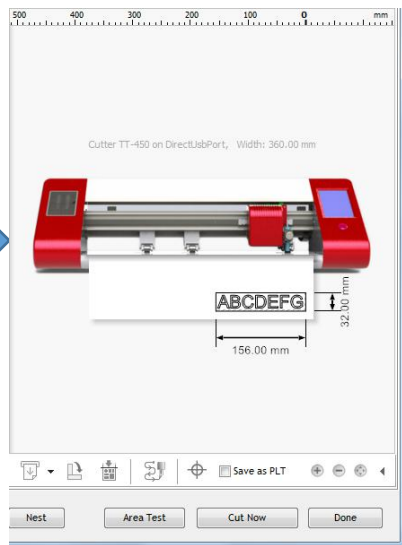
(pic 5-6)

Click finish



(pic 5-7)

Click cut now



(pic 5-8)

Click cut now



(pic 5-9)



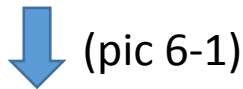
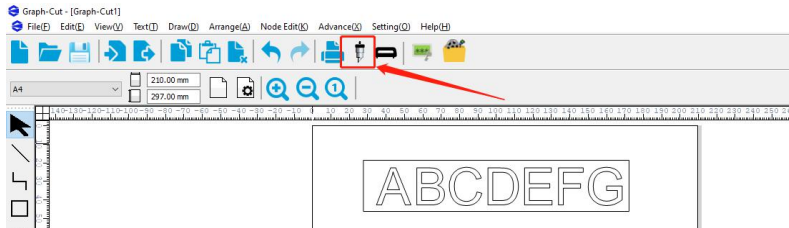
The output is completed, the cutting plotter is cutting



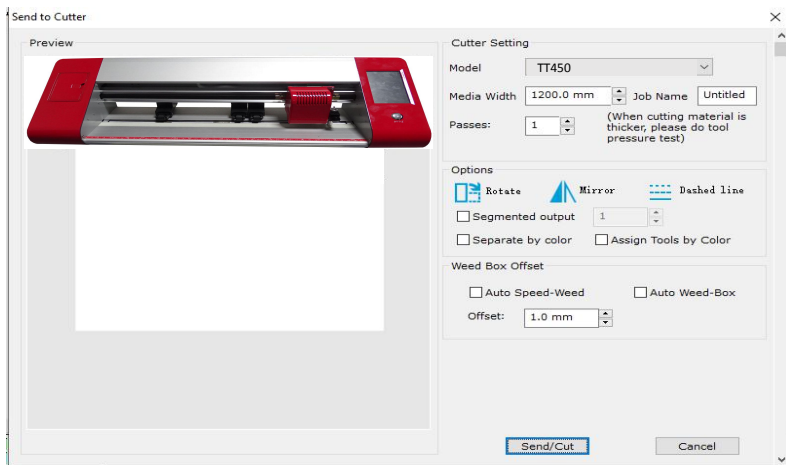
(pic 5-10)

Graph-cut software operation instructions

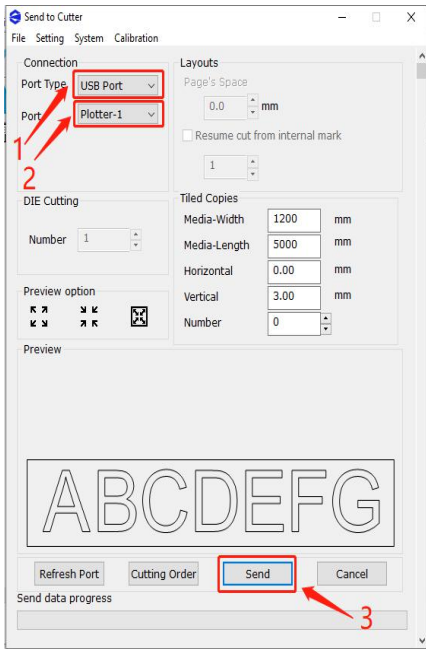
select the cut file and click Cut



Select the machine model and click Send/Cut



click Send



(pic 6-3)

Complete the cutting



(pic 6-4)

Note: Please refer to the USB flash drive for specific operation, including the following videos

1. Ordinary cutting video
2. Automatic contour video
3. Automatic deviation correction video
4. Software installation video

