

# **VEVOR<sup>®</sup>**

**TOUGH TOOLS, HALF PRICE**

Technical Support and E-Warranty Certificate [www.vevor.com/support](http://www.vevor.com/support)

## **SHOWER PUMP**

### **INSTALLATION INSTRUCTIONS**

**MODEL:FLO300**

We continue to be committed to provide you tools with competitive price.

"Save Half", "Half Price" or any other similar expressions used by us only represents an estimate of savings you might benefit from buying certain tools with us compared to the major top brands and does not necessarily mean to cover all categories of tools offered by us. You are kindly reminded to verify carefully when you are placing an order with us if you are actually saving half in comparison with the top major brands.



# VEVOR®

TOUGH TOOLS, HALF PRICE

## SHOWER PUMP

MODEL:FLO300



### NEED HELP? CONTACT US!

Have product questions? Need technical support? Please feel free to contact us:

 [CustomerService@vevor.com](mailto:CustomerService@vevor.com)

This is the original instruction, please read all manual instructions carefully before operating. VEVOR reserves a clear interpretation of our user manual. The appearance of the product shall be subject to the product you received. Please forgive us that we won't inform you again if there are any technology or software updates on our product.

## Kindly Reminder



The FLO300 has been developed with the utmost care and it is tested in the factory. Therefore, it is possible that the test water remains in the appliance.

### INSTALLATION REQUIREMENTS

This appliance must be earthed.

If the supply cord is damaged, it must be replaced by a qualified person. The cable type is SJT 18AWGx3C. The IP rating of this appliance is IPX4. Water: The unit is gravity fed from the washing machine, shower, etc. with a built-in pressure switch that detects the incoming waste and starts the pump.

The outlet comes as standard with a 1-1/4" (32 mm) connection, however, 1" (28 mm) can be used with a reducer. If using bends in the connecting pipework, ensure they are smooth curves to avoid blockages. Besides, never use a 90-degree bent, but a 45-degree bent.







## SPECIFICATIONS

The water temperature should be a minimum of 1°C for it is important that the unit does not freeze, and a maximum water temperature is 90°C.

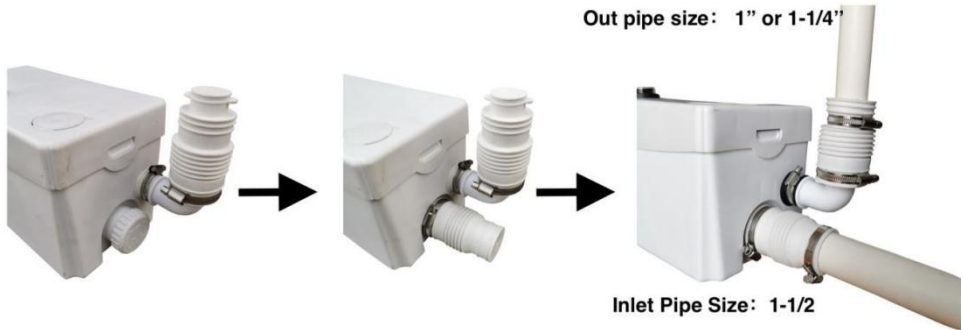
<b>Input Power Rating:</b>	350W	<b>Max Vertical Lift:</b>	7M
<b>Input Voltage:</b>	220-240V, 50HZ	<b>Max Temperature:</b>	90°C
<b>Flow Rated:</b>	100L/MIN	<b>Noise Level:</b>	45 dBA
<b>Max Horizontal Lift:</b>	70M	<b>Degree of Protection:</b>	IPX4

## INSTALLATION GUIDANCE

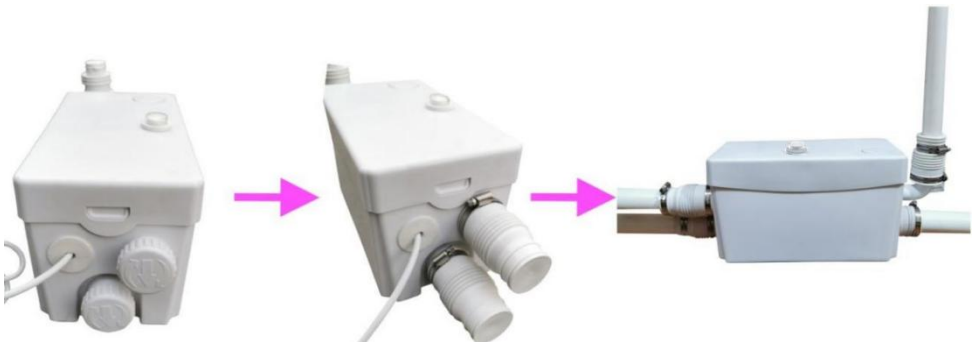
### (1) Accessories list

<b>A</b>  <b>X1</b>	<b>B</b>  <b>X3</b>	<b>C</b>  <b>X3</b>	<b>D</b>  <b>X1</b>
<b>Check Valve</b>	<b>Rubber Tube</b>	<b>Snap hoop (32mm-50mm)</b>	<b>Snap hoop (20mm-32mm)</b>

(2) Install the check valve at the outlet. Tighten with the snap hoop (accessory D). Remove the choke plug from the product, install the rubber tube (accessory B), and tighten it with the snap hoop (accessory C). The outlet pipe is 3/4" (1" and 1-1/4" are also good choices), and inlet pipes are 1-1/2".



(3) The other side of the product has two water inlets, which are covered with a choke plug. When installing, the arrow on the choke plug is downward, then the plug can be pulled out. Then install the snap hoop etc. Unused water inlets should be covered with choke plugs, and the direction of the arrow should be turned to other directions.



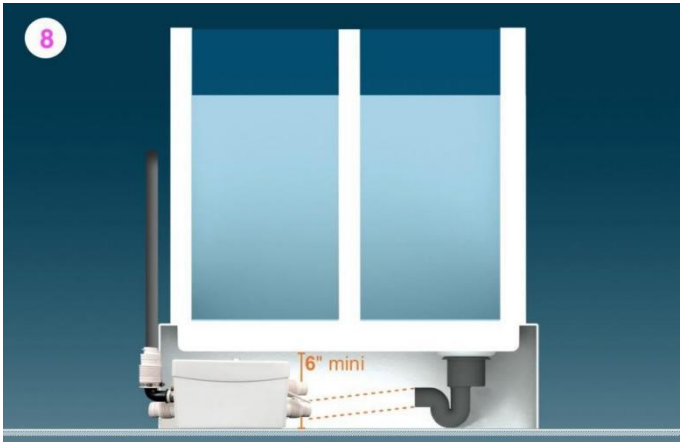
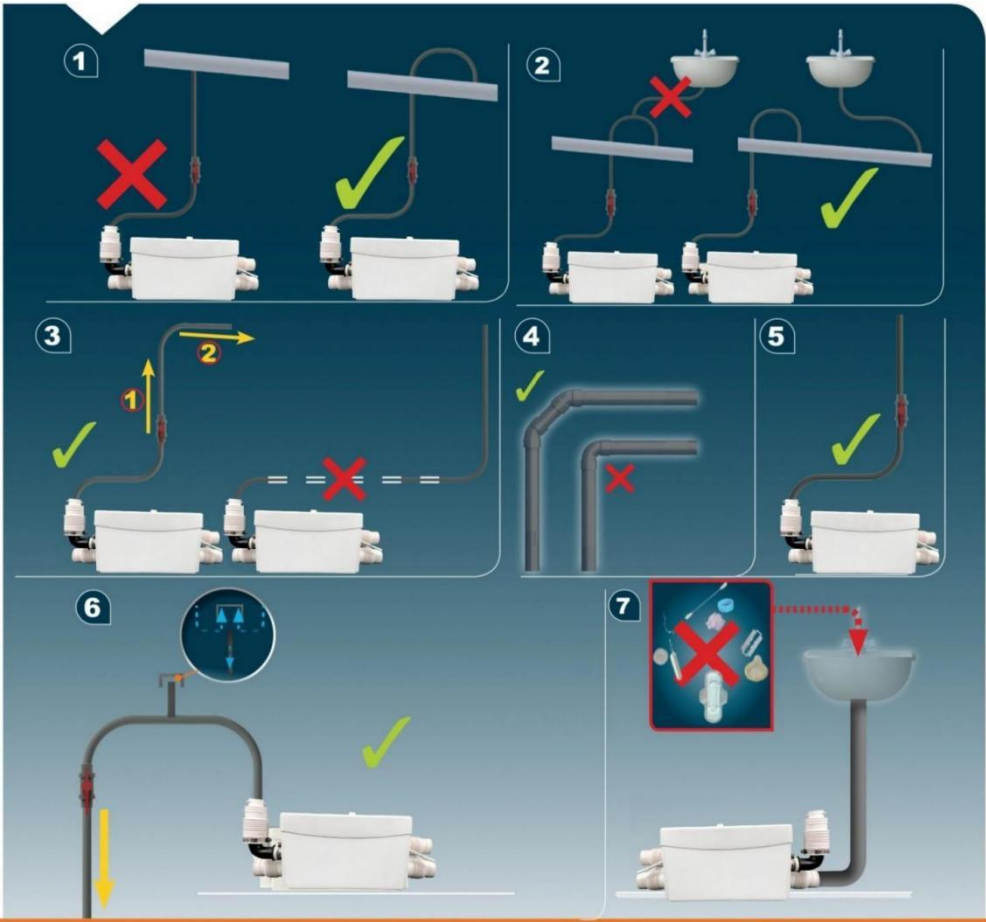
(4) Notes and installation diagram.

For wastewater from the shower and bath, ensure that the slope of the siphon is at least 1% (0.4 inches per 40 inches) so that the wastewater flows through the natural gravity to the unit position.

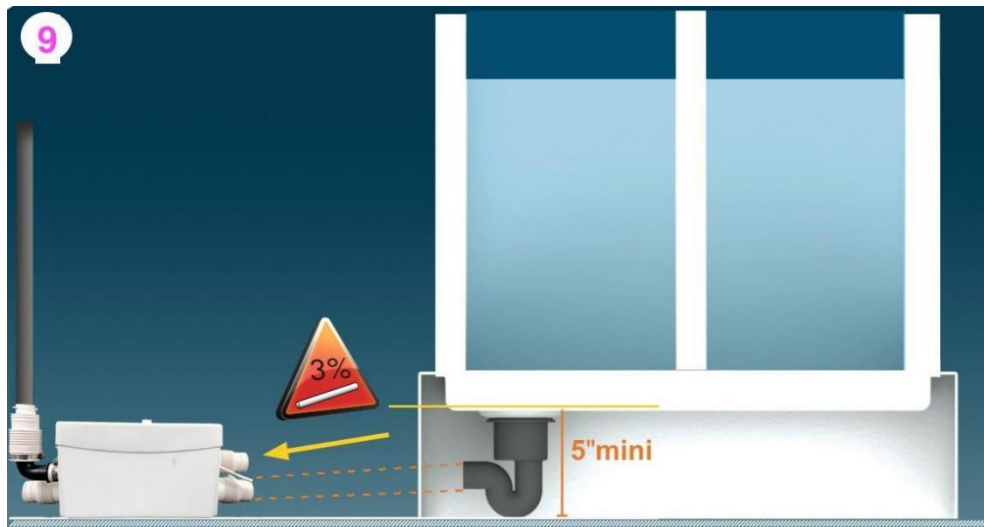
If other sanitary units are connected to the disposal line along the disposal circuit, install check valves in the appropriate waste pipes to prevent backflow.

The slope of the horizontal components must be at least 1%.

**Note:** Discharge pipe length to the first elbow should be a minimum length of 1.6



(5) If installing underground, the method is as follows:





## TROUBLE SHOOTINGS

Some malfunctions of the grinder are not practically serious. You can correct it by yourself. To diagnose and find a solution to the Trouble, refer to the diagram below. For other malfunctions, contact the supplier or a qualified professional.

MALFUNCTIONS	POSSIBLE CAUSES	SOLUTIONS
The appliance occasionally starts to work	The connected pipelines are leaking	Check the installation in front of the appliance
	The check valve is leaking	Clean or replace the check valve
The motor is running properly, but the water runs slowly away.	The aerator in the lid is blocked	Clean the aerator
The engine is running properly but non-stop or runs for a long time	The height or length of the drain is too large, or too many bends are used (power failure)	Check the installation
	The pump is blocked	Turn off the power, disassemble the pump and unblock
The motor is not switched on	The power supply is not switched on	Switch the on power supply (repeat)
	The plug is defective	Repair the plug
	The trouble with the motor or sensor	Remove the lid, flush clean, and dry the sensor up (hair dryer)
The motor rattles with a noise	There's a strange object in the motor	Remove the lid, clean it and remove the object
The motor is buzzing and does not rotate	The condensator is broken or has trouble with the motor	Get in contact with a qualified specialist or the supplier
	There's a strange object in the motor Remove the lid, clean it and	Remove the lid, clean it and remove the object

**Importer:** WAITCHX

**Address:** 250 bis boulevard Saint-Germain 75007 Paris

**Importer:** FREE MOOD LTD

**Address:** 2 Holywell Lane, London, England, EC2A 3ET

**Manufacturer:** Ningbo YUNSUN Electromechanical Co., Ltd

**Address:** Building 3 No.7 Hongshen Road Hongtang Industrial Zone A,

Jiangbei District 315033 Zhejiang P.R. China

**Made In China**



EUREP UK LTD

UNIT 2264, 100 OCK STREET, ABINGDON

OXFORDSHIRE ENGLAND OX14 5DH



EUREP GmbH

Unterlettenweg 1a, 85051

Ingolstadt, Germany



**VEVOR<sup>®</sup>**

**TOUGH TOOLS, HALF PRICE**

**Technical Support and E-Warranty Certificate**

**[www.vevor.com/support](http://www.vevor.com/support)**