



PORTABLE ELECTRIC
CAR CHARGER
USER MANUAL

VEVOR[®]

PORTABLE ELECTRIC CAR CHARGER

16A-TYPE2



Model 1: CEE plug



Model 2: Schuko Plug

NEED HELP? CONTACT US!

Have product questions? Need technical support?
Please feel free to contact us:



CustomerService@vevor.com

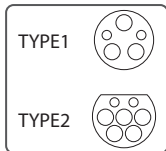
Dear Customer, Many thanks for choosing to purchase a Vevor product. Thanks to its technology, design and operation and the fact that it exceeds the strictest quality standards, a fully satisfactory use and long product life can be assured.

Please read this manual carefully to use the product correctly and safely. Before using this product please pay special attention to “safety advice and warnings”. This product is intended for domestic use only. Please keep this manual safe for future use. Vevor will not accept any liability if the product is subject to improper use, or failure to comply with this guidance.

APPLICABLE VEHICLES

There are two different charging standards for EVs, Type 1 and Type 2. Please make sure you are choosing the correct charging plug for your EV.

The IEC 62196 Type 2 plug was selected by the European Commission as official charging plug within the European Union. It is used for charging electric cars, Tesla included, mainly within Europe.

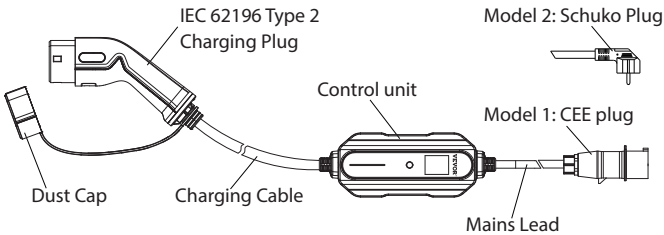


SAFETY ADVICE AND WARNINGS

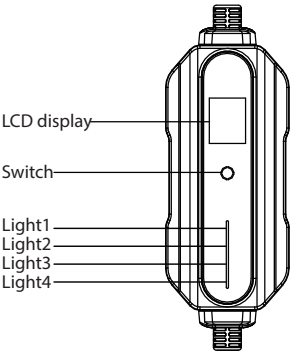
- Read these instructions carefully before plugging in the charger and keep them for future reference. Failure to follow and observe these instructions could lead to an accident.
- Do not allow infants or children to play with packaging material. It may cause suffocation.
- Do not disassemble, repair or modify this product.
- This charger shall not be used by children. Keep the charger and its cord out of reach of children.
- This charger can be used by people with reduced physical, sensory or mental capabilities or lack of experience and knowledge if they have been given supervision or instruction concerning use of the appliance in a safe way and understand the hazards involved.
- This charger is not a toy. Children should be supervised to ensure that they do not play with the appliance.
- Ensure that the voltage indicated on the rating label matches the mains voltage before plugging in the charger.
- Connect the charger to a socket that can supply a minimum of 32 amperes.
- The charger's plug must fit into the mains socket properly. Do not alter the plug.
- Do not use the charger if the cable or plug is damaged. If any of the charger casings break, immediately disconnect the charger to prevent the possibility of an electric shock.
- Do not use the charger with damp hands or feet or barefooted.
- Do not use in inclement weather or immerse the portable charger in water.
- Do not force the power cord. Never use the power cord to lift up, carry or unplug the charger.
- Check the state of the power cord. Damaged or tangled cables increase the risk of electric shock.
- The temperature of the accessible surfaces may be high when the charger is in use.

- Do not place the charger unit or its cables on or near high temperature items.
- Do not leave this product in a closed unventilated environment while in use.
- The charger must be grounded.
- The charger does not contain any user-serviceable parts.
- Please do not disconnect the plugs while the EV charger is charging the vehicle.
- Do not operate the charger in temperatures outside its operating range of -13° F to 122°F(-25°C ~+ 50°C)

PORTABLE EV CHARGER COMPONENTS



MEANS OF INDICATOR LIGHTS



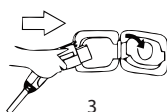
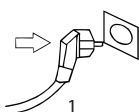
LED Light 1 (Green)	LED Light 2 (Green)	LED Light 3 (Green)	LED Light 4 (Red)	Status
ON	OFF	OFF	OFF	Read to Connect to Vehicle
FLASH	FLASH	FLASH	OFF	Charging
ON	FLASH	OFF	OFF	Full Charged
OFF	OFF	OFF	ON	See Troubleshooting

CHARGING YOUR VEHICLE

Use only on mains power with fault current circuit breaker.

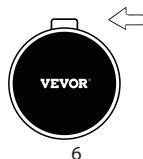
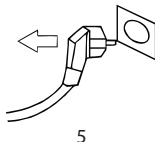
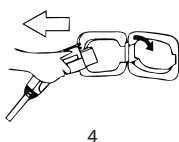
Carefully read this guide together with your vehicle owner's handbook prior to charging your electric vehicle.

1. Firmly insert the power plug into the outlet on the wall. (Figure 1)
2. Select the required current by pressing the button continuously, but do not exceed the maximum allowable current of the socket (Figure 2).
3. Insert the Type 2 plug into the inlet on the electric vehicle (Figure 3).
4. The device starts charging automatically after the LED Light 1 begins to keep blinking regularly.



STOP CHARGING

1. Disconnect the Type 2 plug from the vehicle inlet (Figure 4).
2. Disconnect the power plug from the outlet (Figure 5).
3. Replace the charger plug dust cap and store the charger unit in the bag provided, in a dry place (Figure 6).



TROUBLESHOOTING

Problem	Possible Cause	Solution
Indicator LED's not illuminated	No power to unit	1. Check circuit breaker and other circuit loads. 2. Try another wall outlet. 3. Ensure mains plug is fully inserted into the wall outlet.
	Portable charger internal failure	Contact support
Vehicle will not charge	Charging plug is not inserted fully into the vehicle	1. Perform a visual check of the charging plug. 2. Remove the charging plug from the vehicle, then reinsert it into the vehicle, ensuring it is fully seated into the vehicle's receptacle.
	Vehicle is not in a state to accept a charge	Verify vehicle is able to accept charge. Refer to the vehicle owner's manual for charge instructions.

LED 4 Red indicator remains solid	Charger is not grounded	<ol style="list-style-type: none"> 1. Disconnect the charger from the wall outlet. 2. Have a qualified electrician inspect the electrical installation to determine the fault. Note: An electric shock hazard exists if the installation is not grounded.
LED 4 Red indicator flashes 1 times every 2 seconds	Abnormal communication error	<ol style="list-style-type: none"> 1. Switch off wall outlet and disconnect charging plug from vehicle receptacle. 2. Switch on wall outlet, reselect current rating and reattach charging plug to vehicle receptacle. 3. If problem persists cease using device and contact support.
LED 4 Red indicator flashes 2 times every 2 seconds	Under voltage detected	<ol style="list-style-type: none"> 1. Charger will stop working when voltage $\leq 75V(\pm 5V)$ for 2 seconds, and will revert back to normal charging when voltage returns to $90V(\pm 5V)$ in 5 seconds. 2. Problem may be temporary, however if the problem persists have a qualified electrician check the integrity of your local circuit.
LED 4 Red indicator flashes 3 times every 2 seconds	Over voltage detected	<ol style="list-style-type: none"> 1. Charger will stop working when voltage $\geq 270V(\pm 5V)$ for 2 seconds, and revert back to normal charging when voltage returns to $254V(\pm 5V)$ in 5 seconds. 2. Problem may be temporary, however if the problem persists have a qualified electrician check the integrity of your local circuit.
LED 4 Red indicator flashes 4 times every 2 seconds	Current leakage detected	<ol style="list-style-type: none"> 1. When a leakage $> 25mA(\pm 5mA)$ is detected the device will stop charging. 2. Switch off wall outlet and disconnect charging plug from vehicle receptacle. 3. Switch on wall outlet, reselect current rating and reattach charger plug to vehicle receptacle. 4. If problem persists cease using device and contact support.
LED 4 Red indicator flashes 5 times every 2 seconds	Over current status detected	<ol style="list-style-type: none"> 1. The control unit will enter into a cycle of self-testing (up to 3 times). If the problem persists charging will stop. 2. Switch off wall outlet and disconnect charging plug from vehicle receptacle. 3. Switch on wall outlet, reselect current rating and reattach charging plug to vehicle receptacle. 4. If problem persists, cease using device and contact support.

LED 4 Red indicator flashes 6 times every 2 seconds	<p>Above temperature limit Cases:</p> <ol style="list-style-type: none"> 1. Temperature is too high. The charger will restart charging when it cools down. 2. House/socket wiring may be faulty. 	<ol style="list-style-type: none"> 1. Inspect charger for overheating (hot to the touch >85°C). Charging will naturally restart once the temperature returns to under 65°C. <ol style="list-style-type: none"> a. Carefully unplug the portable charger from the wall outlet and allow to cool. b. If the condition persists, contact support for assistance. 2. Disconnect the portable charger from the wall outlet. 3. Have a qualified electrician inspect the integrity of the wall outlet.
---	--	---

TECHNICAL SPECIFICATION

Model	Type 2 Portable Charger
Line Input Power	110-240V
Current	16A/13A/10A/8A/6A
Circuit Breaker Rating	20A amps@240v
Power Draw at Idle	< 2 watts
EV Charging Plug	IEC 62196 Type 2
Operating Temperature	-13°F to 122°F / -25°C to 50°C
Power Plug	CEE or VDE
Cable Length	7.5 m
Protection Level	IP54 for the Type 2 plug and IP66 for the controller box
Charging Protection	Over-current protection, over-voltage protection, under-voltage protection, leakage protection, and overheat protection integrated.
Certificate	CE / RoHS
Weight	3.5 kg



E-mail: CustomerService@vevor.com

Distributor name: Shanghai Sishun e-commerce Co., Ltd

Manufacturer: Jiangsu Yihang Electric Science and Technology Co., Ltd

Address: No. 262 DEYU road, Hongshan street, Xinwu district, Wuxi, Jiangsu, 214145 China

EC REP: EUREP GmbH

Unterlettenweg 1a, 85051 Ingolstadt Germany

eurep@eurep-gmbh.com

+49 841 8869 7744

Made in China

VEVOR[®]

E-mail: CustomerService@vevor.com