

# Instruction

- 1: The factory fingerprint head has no fingerprint. (Note: when the fingerprint is empty, no fingerprint can open the door)
- 2: A total of 30 fingerprints can be registered.

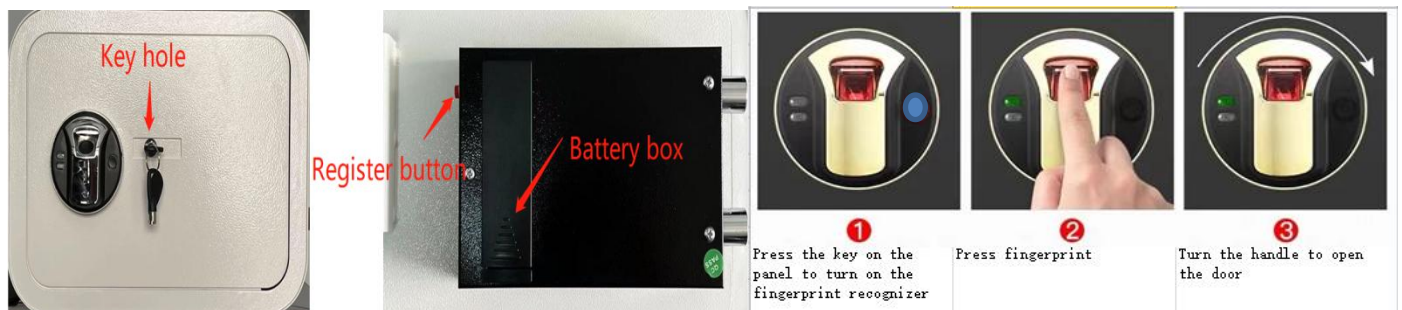
Note: after the first power on, reset the system first: press and hold the registration button for 5S, and the green light flashes until you hear a long "drop". Release the registration button, indicating that the reset is successful (at this time, the fingerprint is empty).

## **Fingerprint registration: (it is recommended that three different fingerprints be successfully registered)**

1: Press the registration button (red), see that the fingerprint head is on, input the same fingerprint five times in a row, see that the green light on the fingerprint head is on, and hear a long "drop" sound at the same time. Table assembly registration succeeded.

Note: if the registration is unsuccessful, the fingerprint head will light red and the buzzer will sound "didi" three times. Indicates that registration failed.

## **Fingerprint door opening:**



Press the panel button once, the fingerprint head lights up, input the correct fingerprint, when the green light is on, hear a long sound of "drop", and the electromagnet is engaged for 6 seconds.

Note: if the wrong fingerprint is input, the fingerprint head will light red, and the system will prompt "didi" three times.

## **System self-locking function:**

When the wrong fingerprint is input for 5 consecutive times, the system will lock for one minute. At this time, any operation will be invalid and the buzzer will sound "drip". The green light flashes.

四: Delete fingerprint (system reset):

Press and hold the registration key for 5S, and the green light flashes until you hear a long "drop". Indicates that the fingerprint has been cleared.

## **Undervoltage prompt:**

When the power supply voltage is less than or equal to 4.6V (+ / - 0.3V), input the correct fingerprint. When opening the door, the traffic lights will light up together, and the buzzer will sound ten times. Please replace the battery in time.

Characteristic parameters:

Working voltage: 4.4-6v

Standby current: below 20ua

Operating current: 350mA

## **Important: in order to improve the correct recognition efficiency, users can refer to the following suggestions**

1. It is recommended that each user register 2-3 fingerprints
2. It is recommended that women and children register their thumbs and middle fingers as much as possible
3. Press the finger evenly as far as possible, not too heavy or too light. It is recommended to press the finger gently
4. It is recommended to register fingerprints from multiple angles
5. When selecting batteries, it is recommended to use high-performance alkaline batteries of high quality. Do not use inferior or counterfeit batteries and any carbon batteries