

VEVOR[®]

**WELDING TABLE
USER MANUAL**



Note: the quantity of parts shown in the manual is the actual usage and the unused parts are spare parts.

NEED HELP? CONTACT US!

Have product questions? Need technical support? Please feel free to contact us:

✉ CustomerService@vevor.com

This is the original instruction, please read all manual instructions carefully before operating. VEVOR reserves clear interpretation of our user manual. The appearance of the product shall be subject to the product you received. Please forgive us that we won't inform you again if there is any technology or software updates on our product.

ASSEMBLY PRECAUTIONS

1. Assemble only according to these instructions. Incorrect assembly can be a hazard.
2. Wear safety goggles and heavy-duty work gloves during assembly.
3. Do not assemble when tired or when under the influence of alcohol, drugs or medication.
4. Weight capacity and other product capabilities apply to properly and completely assembled product only.

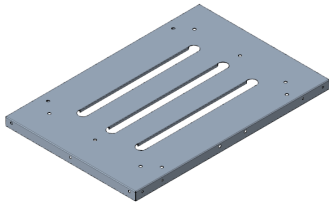
USE PRECAUTIONS

1. This product is not a toy. Do not allow children to play with or approach this item.
2. Use as intended only. Do not sit or stand on table.
3. Inspect before every use. Do not use if parts are loose or damaged.
4. Use only on flat, level, hard surface.
5. Do not exceed listed weight capacity. Tighten all knobs securely before applying load. Be aware of dynamic loading! Sudden load movement may briefly create excess load causing product failure.

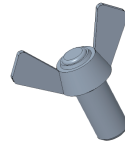
ASSEMBLY INSTRUCTIONS

For additional information regarding the parts listed in the following pages, refer to the Assembly Diagram of this manual. Unwrap and separate all parts on a clear work area.

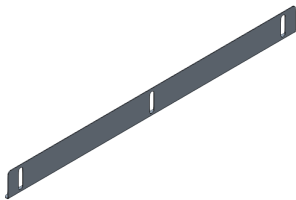
PACKAGE CONTENTS



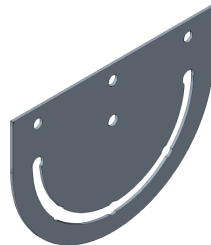
1. Table Top × 1



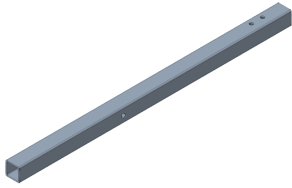
2. M8 x 16mm Wing Screw × 11



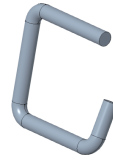
3. Plate 1 × 1



4. Locking Angle Plate × 2



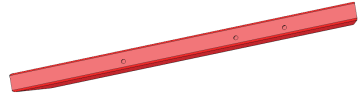
5. Left Square Tube × 1



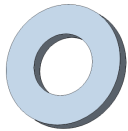
6. Locking Device × 2



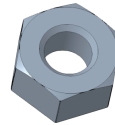
7. M6 x 40mm Screw × 18



8. Plate 2 × 2



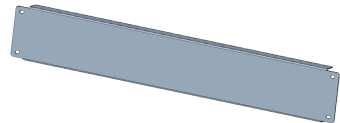
9. M6 Flat Gasket × 18



10. M6 Nut × 18



11. Antiskid Sleeve × 4



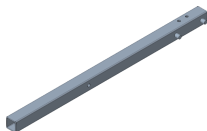
12. Plate 3 × 1



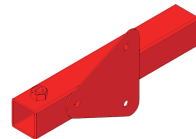
13. M6 x 16mm Screw × 4



14. Handle × 1



15. Right Square Tube × 1



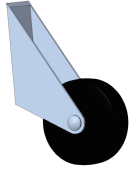
16. Plate 4 × 2



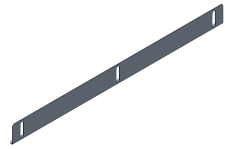
17. Plate 5 × 2



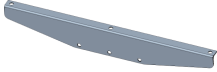
18. Plate 6 × 1



19. Casters Wheel $\times 2$



20. Plate 7×1



21. Plate 8×2



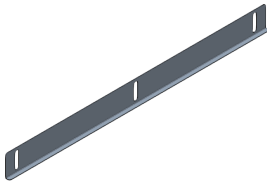
22. M8 x 16mm Screw $\times 6$



23. M8 Wing Nut $\times 4$



24. M8 Flat Gasket $\times 4$



25. Plate 9×1



26. M8 Spring Washer $\times 6$



27. M8 Nut $\times 6$



28. Plate 10×1

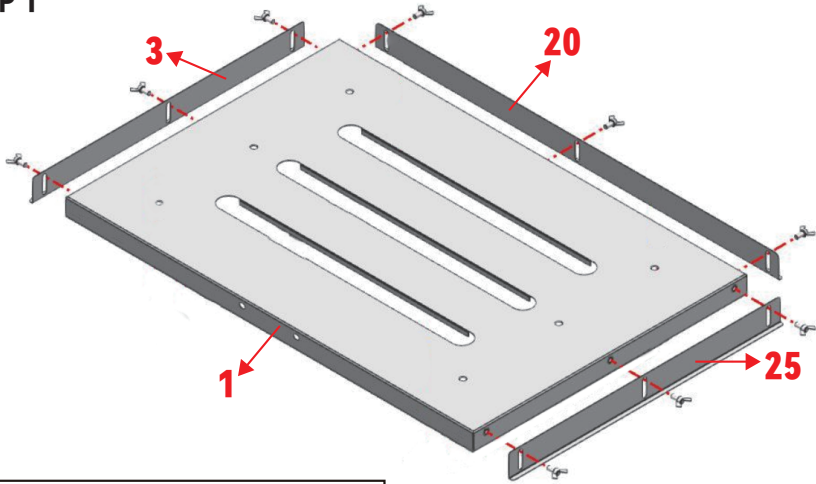


29. Triangular Iron Plate $\times 2$

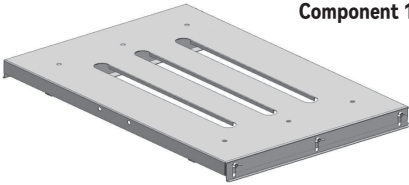
ASSEMBLY STEPS



STEP 1

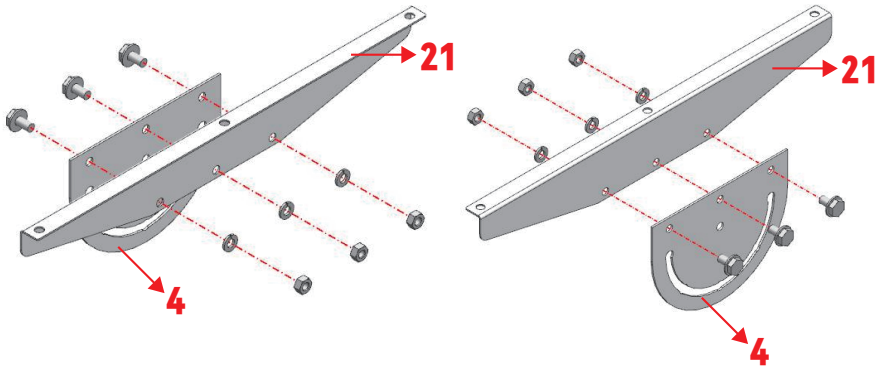


Component 1

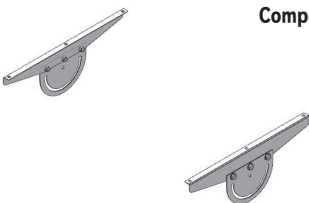


2  × 9

STEP 2



Component 2

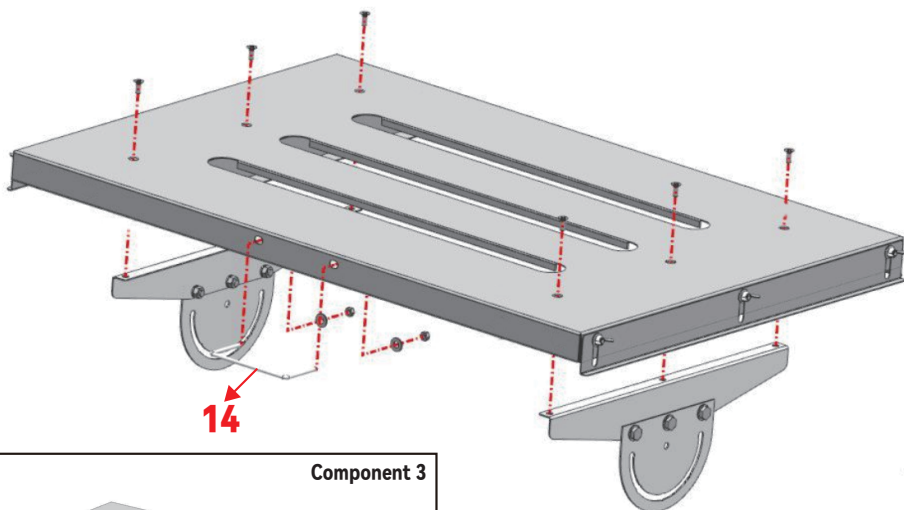


22  × 6

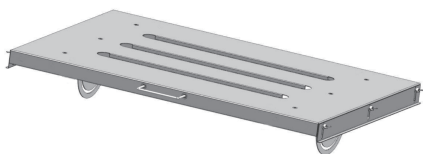
26  × 6

27  × 6

STEP 3



Component 3

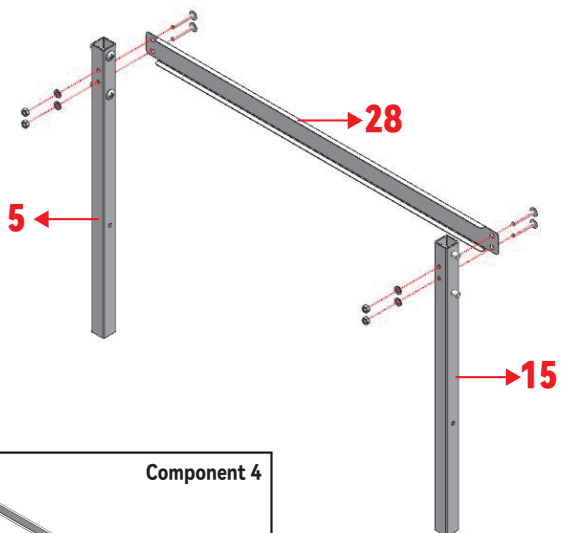


9  × 2

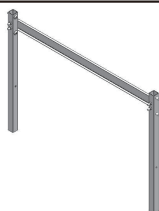
10  × 2

13  × 6

STEP 4



Component 4

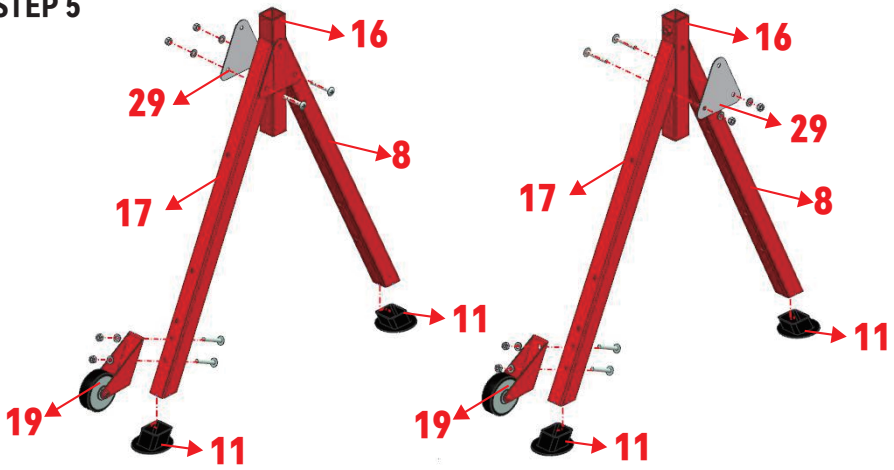


7  × 4

9  × 4

10  × 4

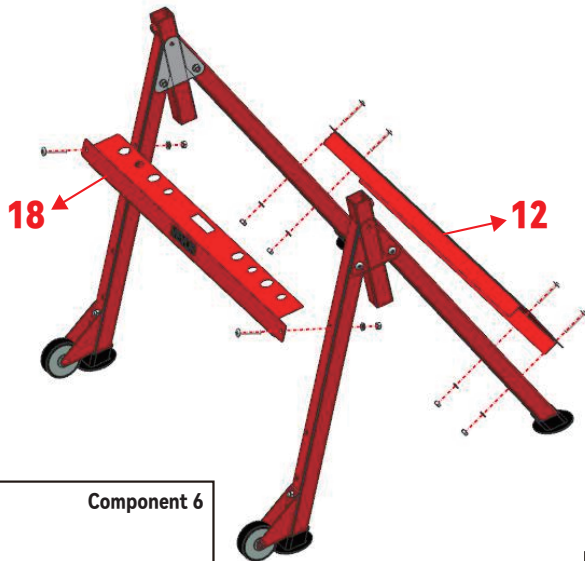
STEP 5



Component 5

7		× 8
9		× 8
10		× 8

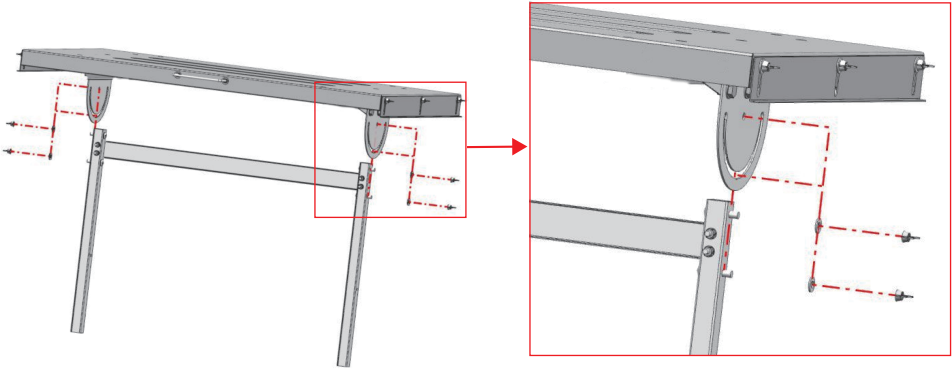
STEP 6



Component 6

7		× 6
9		× 6
10		× 6

STEP 7



Component 7



23  × 4

24  × 4

STEP 8



2  × 2

COMPLETION



Manufacturer: Ningbo Yizefeng Mechanical components Co.,Ltd
ADD: No6, Zhushan Vilage Industrial Area, Lizhou Street, Yuyao City, Zhejiang Province China
Made in China

VEVOR[®]

E-mail: CustomerService@vevor.com