

(OUTDOOR USE)

INSTRUCTION MANUAL

Zipline Trolley

GUIDELINES FOR USE

1. Always start from a secure and stable platform.
2. Always hold the trolley firmly with both hands (or hold on tight to the rope of the monkey swing if applicable).
3. Release the trolley only when it has reached complete standstill, and feet can be placed onto the ground/platform.
4. Always use the product under supervision of an adult.
5. Always check the structure, fixings, trolley, cable tensioners, cable spanner and cable before using the zip wire.
6. Do not allow children under, next to or in the neighbourhood of the construction when it is in use.
7. Do not wear loose fitting clothing (ponchos, scarfs...) when using the zip wire. This can be dangerous because of entrapment risk.
8. Do not use the zip wire when the construction and the trolley are wet.
9. Only the KBT monkey seat with special D-shackle is permitted to be attached to the trolley of the zip wire. The use of any other seats, ropes.... is considered as inappropriate use and is deemed to be dangerous.

INSPECTION AND MAINTENANCE

The frequency of inspection and maintenance will vary with the type of equipment or materials used or other factors (e.g. heavy use, levels of vandalisme, coastal location, air pollution, age of equipment, ...). All parts of the product need to be checked regularly by the user to minimise the risk of accidents. Special attention should be paid to the cable tensioners, cable spanner and trolley.

Routine visual inspection (weekly to monthly)

- Always check that the bolts and nuts are securely fastened.
- Check the shock absorbing surface for objects that don't belong there.
- Check for missing parts.
- Check the equipment ground clearances.

Operational inspection (1 to 3 months)

- Check the stability of the construction.
- Check every part for excessive wear and remove when necessary.

Annual inspection (1 up to 2 times per year)

- Check for rust and corrosion.
- Check every part for excessive wear and remove when necessary.

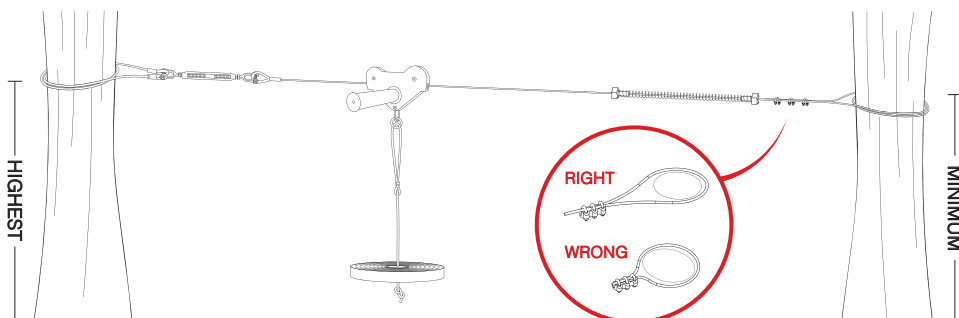
INSTRUCTIONS FOR CABLE HEIGHT

In order to assemble the zip wire correctly and safely, the following height requirements need to be followed. One end of the cable must be mounted at a higher level than the other end. These heights are dependant on the height of the user and the distance between the fixing points. In order to determine the right heights, the following steps must be.

FOLLOWED:

01. Measure the height of the user. If there is more than one user, and the difference in height is less than 15 cm, use the height of the tallest user. If the difference is more than 15 cm, the zip wire needs to be adjusted every time the user's height is outside the specified range.
02. Add 75 cm to the measured height of the user and mark this point on the tree or construction frame.
03. Measure the distance between the 2 fixing points. Determine the corresponding height in the following table and mark this height on the tree / construction at the other side.

Height user	Height lowest fixing point (x)	Height highest fixing point according to the following distances between the 2 fixing points (y)				
		24,5m	21,5m	18,5m	15,5m	12,5m
1,2m	2m	2,9m	2,75m	2,6m	2,45m	2,3m
1,4m	2,1m	3m	2,9m	2,75m	2,6m	2,45m
1,5m	2,3m	3,2m	3m	2,9m	2,75m	2,6m
1,7m	2,45m	3,35m	3,2m	3m	2,9m	2,75m
1,8m	2,6m	3,5m	3,35m	3,2m	3m	2,9m



TOOLS REQUIRED



**Y-TYPE
SOCKET KEY**



THICK GLOVES

Recommend to wear thick gloves when assembling (Not included).



**330 LBS
CAPACITY
(COMBINED)**



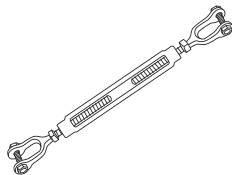
**2 PERSON
ASSEMBLY**



**APPROXIMATELY
30 MIN.
ASSEMBLY**

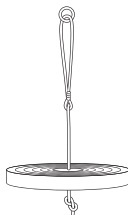
HARDWARE

1



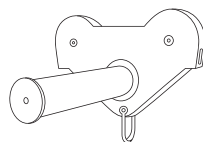
TURNBUCKLE x1 PC

2



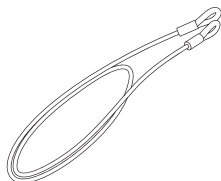
SWING x1 PC

3



ZIPLINE TROLLEY x1 PC

4



CABLE SLING x1 PC

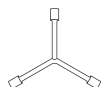
5



MAIN CABLE x1 PC

OPTIONAL ACCESSORIES

A



**L-TYPE SOCKET
WRENCH M8/M10/M12
x1 PC**

B



**WRENCH M13
x1 PC**

C



**U CLAMPS
x3 PCS**

D

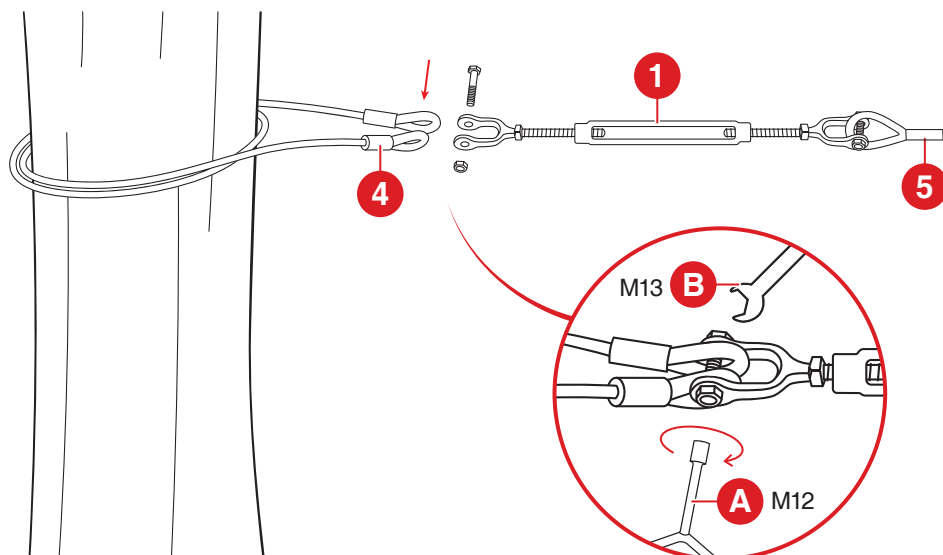


**SPRING BRAKE
x1 PC**

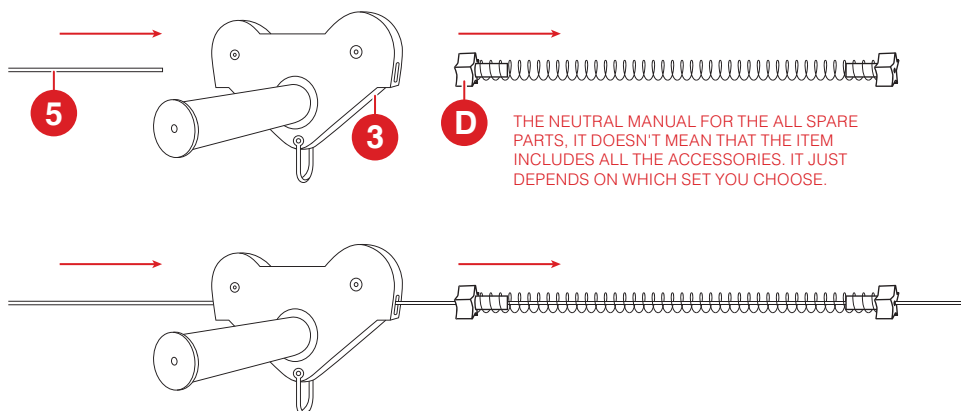
THE NEUTRAL MANUAL FOR THE ALL SPARE PARTS, IT DOESN'T MEAN THAT THE ITEM INCLUDES ALL THE ACCESSORIES. IT JUST DEPENDS ON WHICH SET YOU CHOOSE.

PRODUCT ASSEMBLY

- 1 Wrap the cable sling around the tree. Pass the looped ends of the cable sling through the turnbuckle. Use M13 wrench to fix one end and use Y-type socket key M12 to tighten the turnbuckle's screws. (Both ends are fixed in the same way)



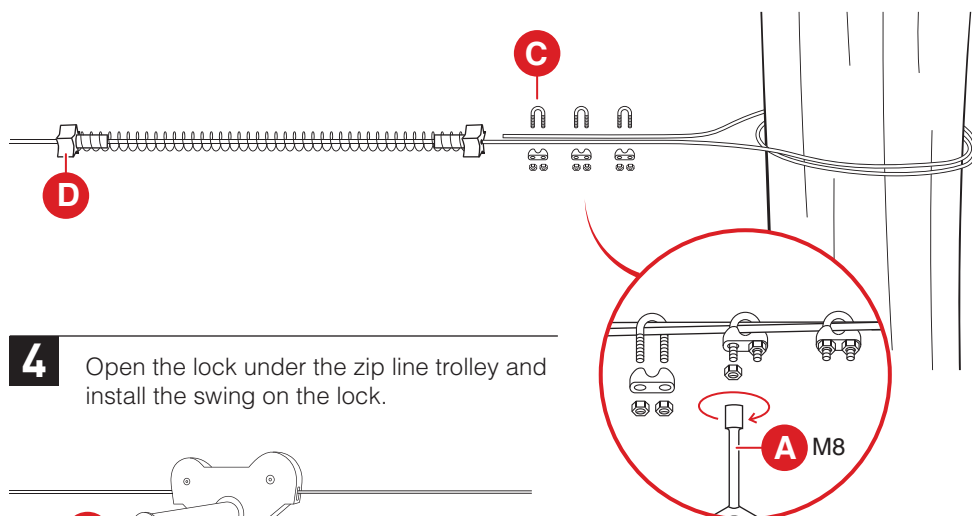
- 2 Pass the main cable through the zipline trolley and spring brake.



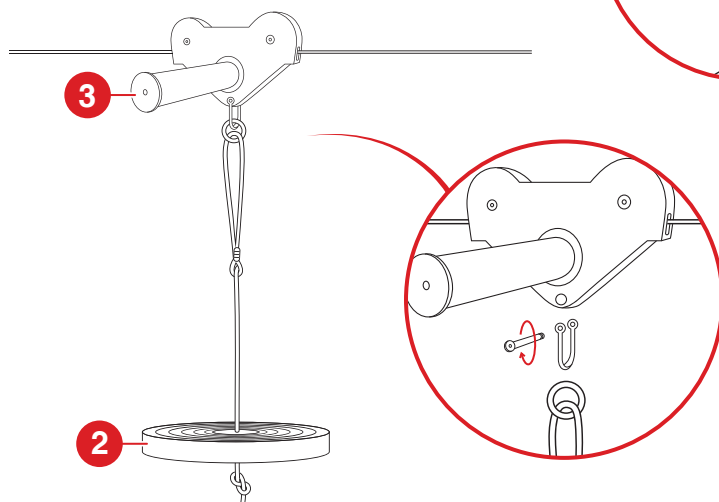
THE NEUTRAL MANUAL FOR THE ALL SPARE PARTS, IT DOESN'T MEAN THAT THE ITEM INCLUDES ALL THE ACCESSORIES. IT JUST DEPENDS ON WHICH SET YOU CHOOSE.

PRODUCT ASSEMBLY

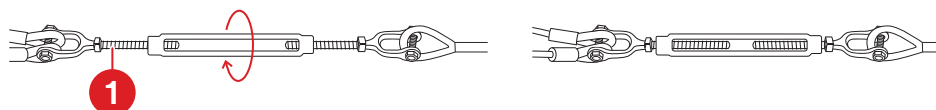
- 3** Wrap the main cable around the another tree. Fix the main cable with U-clamps. Tighten the screws of the U-clamps with Y-type socket key M8. At least three U-clamps(the more the better) are required for fixing the main cable.



- 4** Open the lock under the zip line trolley and install the swing on the lock.



- 5** Tighten the turnbuckle as shown in the figure to keep the main cable straight.



INSTRUCTIONS FOR USE

1. Please keep this instruction sheet safely for future reference, and ensure that you review it with all users.
2. Inappropriate use or faulty application of the product is explicitly forbidden and absolves the manufacturer of all liability.
3. The use of the item is allowed only under continuous supervision by an adult. The product is only intended for use as a zip wire between two points, for 1 user older than 8 years and with a maximum weight of up to 150 kg.
4. The zip wire should only be used after it has been properly installed according to the following guidelines.
5. The application of the item as part of a play frame or any other construction will have to be such that it excludes all risk of entrapment.
6. When mounting or assembling the product, attention should be given to the minimum required distance between the product and eventual obstacles: walls, fencing, ... This distance should be a minimum of 2 metres.
7. In this safety area no hard, angular or pointed objects should be present. The surface underneath the product should be flat and shock absorbing. The product must not be placed on tarmac, concrete or any other hard surface. We advise the removal and storage of all accessories during winter because the characteristics of the soil (when frozen) are not suitable for safe play.
8. Please ensure that the tree, branch or construction to which the zip wire is attached, is able to support a weight of 300 kg.

WARNING

- Adult assembly and supervision required.
- This product should be unpacked and assembled by an adult, including site and tree selection.
- In unassembled state, it contains potentially hazardous small objects, please keep out of children's reach.
- Max User Weight 150kg
- User Age 3+
- Make sure overhead can support 300kg



WARNING

Manufacturer and seller expressly disclaim any and all liability for personal injury, property damage or loss, whether direct, indirect, or incidental, resulting from the incorrect attachment, improper use, inadequate maintenance, or neglect of this product.