

Electric Conveyor Toaster

Users' Manual

PRODUCED BY Guangzhou Zhuolian Catering Equipment Co. , Ltd.

**Company address: No. 6,24 Group, Nanyang Zhuang Economic Society, Qingbu village,
Xinya Street, Huadu District, Guangzhou City, Guangdong province**

Thank you for purchasing this range of appliance of our company. Original instructions for Toaster, Please read all manual instructions carefully before operating. VEVOR reserves clear interpretation of our user manual. The appearance of the product shall be subject to the product you received. Please forgive us that we won't inform you again if there is any technology or software updates on our product.

Warning:

Improper installation, adjustment, alteration, service or maintenance can cause property damage, injury or death. Read the installation, operation and maintenance instructions thoroughly before installing or servicing this appliance.

For your safety

Do not store gasoline or other flammable liquids in the vicinity of this or any other appliance.

WARNING: FIRE HAZARD

The area where the appliance is installed must be kept clear of combustibles and flammables. This includes mops, rags, grease, wrapping paper and electrical cords.

Warning

Electrical Grounding Instructions

This appliance is equipped with a three-prong (grounding) plug for your protection against shock hazard and should be plugged directly into a properly grounded three-prong receptacle. Do not cut or remove the grounding prong from this plug.

Notice

This appliance is designed for use in non-combustible locations only. Install the appliance on a firm, level, non-combustible surface.
For servicing, a clearance of 6 inches (15cm) from rear of the appliance to wall should be kept.

This kind of conveyor toaster is developed by our company. It absorbs the advantages of similar products home and abroad. It is novel in design and reasonable in structure. It is easy to operate and maintain. It is made of stainless steel. The rotation speed of the belt can be adjusted to toast your desired bread. It is an ideal choice for hotels, super-markets, western food kitchen, fast-food chains and other food industries.

1. General information

Proper installation, professional operation and consistent maintenance of this appliance will ensure that it gives you the very best performance and a long, economical life.

This instruction manual contains the information needed to properly install the appliance, and to use and care for the appliance in a manner which will ensure its optimum performance. This manual is considered to be a permanent part of the appliance. This manual and supplied instruction, circuit diagrams, schematics, parts breakdown illustrations, notices, warnings and naming plates must remain with the appliance if it is sold or moved to another location. It should be easily accessible for anyone carrying out the installation, servicing, and cleaning.

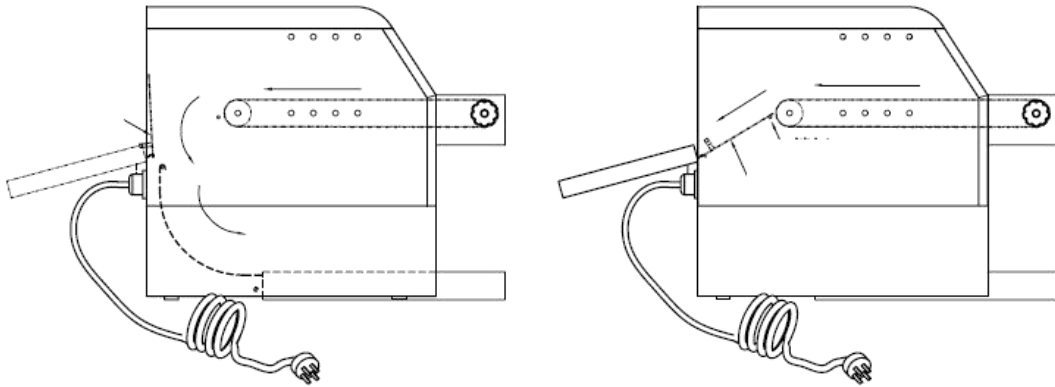
Adjust the speed of conveyor to control the color of toasting bread. The feed ramp can lead bread on to the conveyor. The toast crumb tray collect crumb easily. The front and rear discharge can be changed to use by mind. To ensure proper operation, please read this manual carefully before using. After reading, keep this manual in a convenient place for further reference.

Technical Parameter

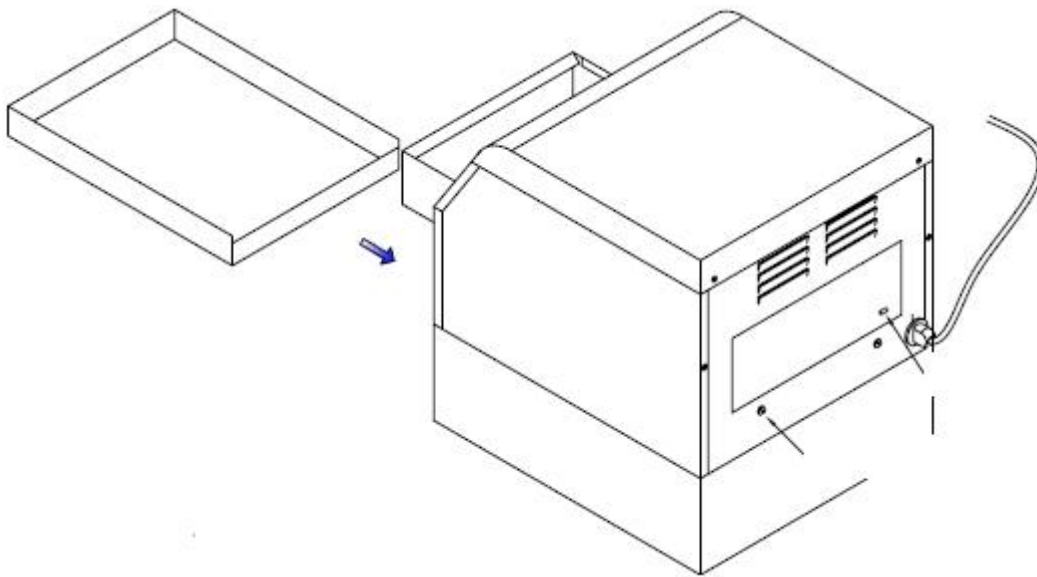
Model	HET-150	HET-300	HET-450
Voltage	110-120V	110-120V	110-120V
Power(W)	1340	2240	2640
Frequency	60	60	60
Food inlet size	90*185mm	90*265mm	90*365mm
Dimension	418×288×387	418×368×387	418×468×387
Efficiency (pcs/h)	150	300	450

2. Additional parts installation

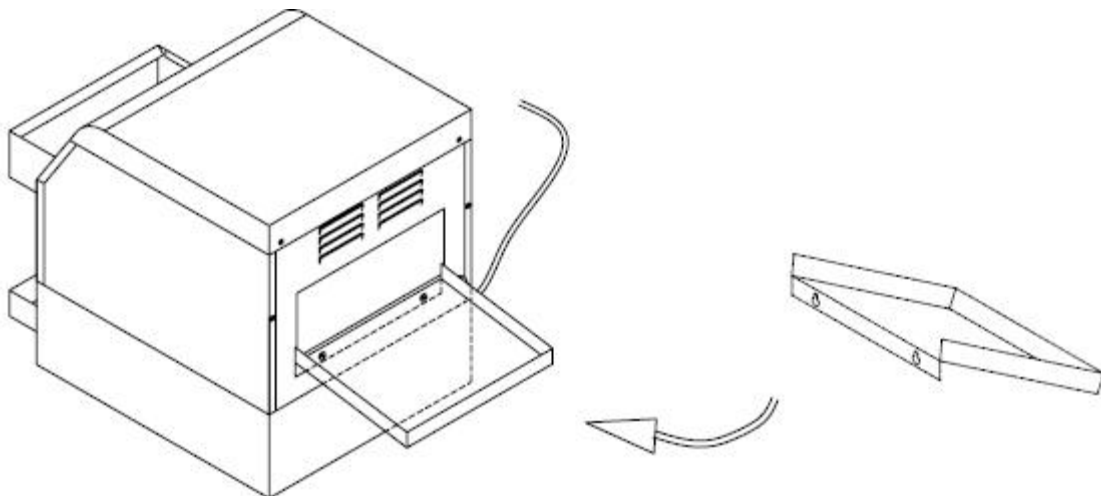
- 2.1. When the package was opened, get the above additional parts as follow: one down tray, one back tray, one guide net and four adjustable feet.
- 2.2. First, install the four adjustable feet into the nuts which are at the bottom of the unit body. Then place the unit at the proper counter height. For the safe operation, adjust the adjustable feet to make the unit placed steadily.
- 2.3. Insert the hook of the crumb tray into the appliance and make sure it meets the stop pins as picture one showing.



2.4. Down tray installation: Insert the down tray to the hook of the down tray from the back of the appliance following the arrowhead (picture two).



2.5. Back tray installation: Insert the back tray to the hook of the back tray following the arrowhead (picture three).



3、 Electrical parts installation

- 3.1. Make sure the supplied voltage matches the rating voltage on the naming plate.
- 3.2. Make sure that the appliance is grounded safely. For convenient operation, never pile up the sundry goods near the switch.

4. Operation

- 4.1. When the power is on, the indicator will light, turn the knob COLOR CONTROL to right until it reached the position “3” (notice: the speed of the chain net as fast as the color became lighten. When the gearshift switch was turned to the “BREAD” position, the upper heating elements and the lower electric heating element will work simultaneously, and the inside temperature of the unit will go up. The temperature within the unit can reach the highest temperature 284°C in twelve minutes, if no bread is placed inside the unit. Then the temperature will remain at 284°C.
- 4.2. Before toasting, turn on the power and it will take approximately 10 to 12 minutes for the unit to warm up. Then try to toast two pieces of bread to see whether the color is good or not, and adjust the speed of the chain net at your own need. (Notice: The larger scale for the COLOR CONTROL is, the more slowly the chain nets rotate. The color of bread will deepen, and vice versa.) After adjusting the speed of the chain net, put the bread onto the chain net following the guiding net. The bread will go with the chain net into the inside of the unit.
- 4.3. After the bread has been toasted well, put the bread into the down tray, the bread will follow the down tray to slip onto the lower crumb tray from the unit chamber as picture four showing.
- 4.4. If you want to get the bread at the back of the unit, draw the sliding board out of the unit. Then the back sliding board hook meets the pin which is near to the chain wheel. The toasted bread will come out onto the back sliding board as picture five showing. Pull the pull ring and let the back sliding board return to its normal position after being used.
- 4.5. If toasting the steamed bun, turn the knob which in the right to the “BUNS” position, the upper electric heating elements working on. If want to heat preservation, turn it to the “STBY” position.
- 4.6. After using, turn the knob to “OFF” position and pull the plug out.
- 4.7. If the wire is damaged, replace it by the manufacturer or service agent and the qualified person only.

5. Transportation and storage

In the process of transportation, the appliance should be handled carefully, preventing the intense shaking. The packaged appliance should be stored in a well-ventilated area free of caustic air. It cannot be placed in the outside area and should never be put

upside down Keep it dry and dust-free. Do not expose it to direct sunlight. Avoid mechanical shocks and vibrations If it is for temporary storage, the weather- proof method should be taken

6.Cleaning and maintenance

- 6.1. Before cleaning and repairing the unit, cut of the power in case of electric shock.
- 6.2 After finishing a day's work, pull out the tray and clean it Use a piece of wet cloth dampened by detergent solution which is not corrosive to clean the unit. Do not wash the unit with water jets
- 6.3 Never toast any food whose surface is covered by a lot sugar, because the sugar will flow into the unit and cause contamination to the unit It may result in malfunctions of the unit

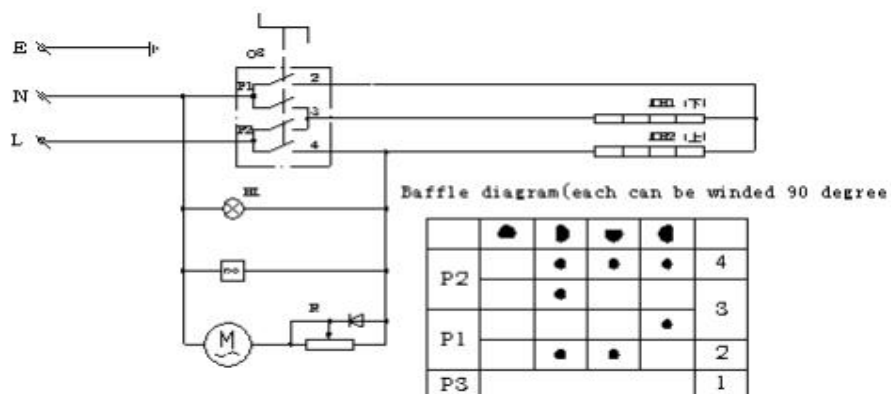
7. Notice

- 7.1 The voltage and phase of power supply should match that one on the naming.plate
- 7.2 Operators should install suitable switch, fuse protector and three-prong receptacle
- 7.3 The appliance should be grounded safely. No insulation material should placed between the body and earth Make sure the appliance is grounded safely to avoid unnecessary electric shock.
- 7.4 Before using, be sure that the wire is not loose and the voltage is normal.

8. Daily checking

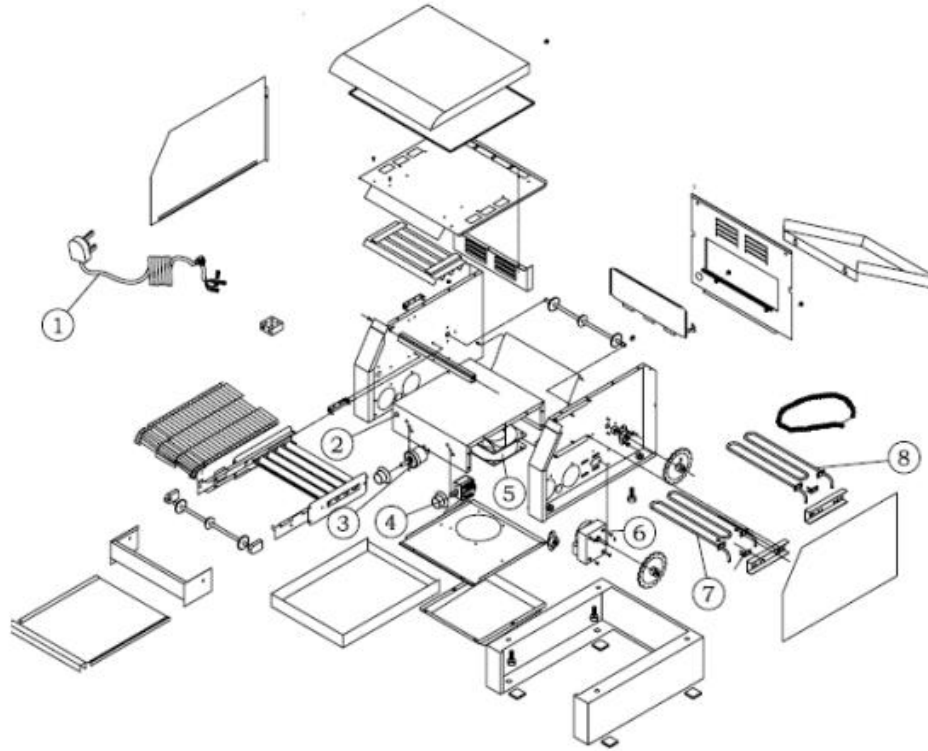
Check the appliance before and after use. Before using, make sure the appliance dose not lean. Be certain that the power cord is not worn out or broken. When in use, make sure no unpleasant smell is present and there is no any unusual noise.

9.Circuit diagram



HL1-----Power indicator lamp ∞-----Fan EHI, EH2-----Electric heating elements
 R-----Speed regulator M-----Motor QS-----Switch

10.Parts breakdown illustration



11. Spare parts

N O .	Description	Model & Specifications			Quantity
		HET-150	HET-300	HET-450	
1	Power cord	3x1.5m m ²	3x2.5m m ²	3x2.5m m ²	1
2	Indicator lamp.	110-120V Green			1
3	Winding resistor	30W 500 Ω			1
4	Switch	4924015000			1
5	Fan	SF23080AT	DP200A	DP200A	1
6	Motor	QXYH6030M23G			1
7	Lower electric heating element	110-120V 0.6kw	110-120V 1.0kw	110-120V 1.2kw	1
8	Upper electric heating element	110-120V 0.7kw	110-120V 1.2kw	110-120V 1.4kw	1

12. Troubleshooting

Troubles	Causes	Solutions
1. Are out of heating when the power and heating indicator are both on.	<ol style="list-style-type: none"> 1. Temperature controller is broken. 2. At least one of heating wires is burned. 3. Temperature protector works. 	<ol style="list-style-type: none"> 1. Change temperature controller. 2. Change the burned heating tube. 3. Dismantle the bottom plate and use hand to reset temperature protector.
2. When the power is on and temperature controller is switched and heating indicator is on and temperature can be not controlled.	<ol style="list-style-type: none"> 1. Temperature controller is out of order. 	<ol style="list-style-type: none"> 1. Change temperature controller.
3. Indicator is not on when the power is on and the heating process is normal.	<ol style="list-style-type: none"> 1. Indicator is broken. 	<ol style="list-style-type: none"> 1. Change temperature controller.
The indicator is out of order when the power is on.	<ol style="list-style-type: none"> 1. Abnormal power supply or cut-off power supply. 2. Fuse is burned. 	<ol style="list-style-type: none"> 1. Check power supply and connection to make power supply be normal. 2. Change fuse.

Aforementioned troubles are just for reference. If any fault occurs, please cease using and turn to professional technicians for check and repair.