

# **VEVOR<sup>®</sup>**

## **TOUGH TOOLS, HALF PRICE**

Technical Support and E-Warranty Certificate [www.vevor.com/support](http://www.vevor.com/support)

### **CURB RAMP USER MANUAL**

We continue to be committed to provide you tools with competitive price. "Save Half", "Half Price" or any other similar expressions used by us only represents an estimate of savings you might benefit from buying certain tools with us compared to the major top brands and does not necessarily mean to cover all categories of tools offered by us. You are kindly reminded to verify carefully when you are placing an order with us if you are actually saving half in comparison with the top major brands.

# VEVOR<sup>®</sup>

TOUGH TOOLS, HALF PRICE

## CURB RAMP



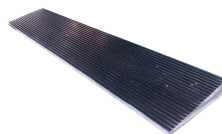
**TYPE A**



**TYPE B**



**TYPE C**



**TYPE D**

### NEED HELP? CONTACT US!

Have product questions? Need technical support? Please feel free to contact us:

 [CustomerService@vevor.com](mailto:CustomerService@vevor.com)

This is the original instruction, please read all manual instructions carefully before operating. VEVOR reserves a clear interpretation of our user manual. The appearance of the product shall be subject to the product you received. Please forgive us that we won't inform you again if there are any technology or software updates on our product.

## INSTRUCTIONS

- For your information, please read these installation instructions before using your curb ramp; Please keep all instructions and refer to them when necessary. It is normal the product has a slight smell. we recommended ventilating before use to avoid the smell.

### WARNINGS



Incorrect installation can cause debris to collect, impeding water flow.



Used in curbs, steps, and uneven pavement.

1. Read and understand manual. And **SAVE THESE INSTRUCTIONS.**
2. Inspect before every use; do not use if parts loose or damaged.
3. Clean dirt, oil and debris off ramps and allow ramps to dry.
4. Set up only on solid, level, dry surface.
5. Be aware of dynamic loading! Sudden load movement may briefly create excess load, causing product failure.
6. Use as intended only.
7. Clean ramps. Prior to each use, clean dirt, oil, or any debris off ramps.
8. This product is not a toy. Do not allow children to play with or near this item.
9. All persons not involved in the loading process must stand clear of the loading ramps. Keep children away. Children must not be allowed in the work area.
10. Store idle equipment. When not in use, store ramps in a dry location to inhibit rust.
11. The warnings, cautions, and instructions discussed in this instruction manual cannot cover all possible conditions and situations that may occur. It must be understood by the operator that common sense and caution are factors which cannot be built into this product, but must be supplied by the operator.

# PARAMETER

Curb ramp - Parameter										
TYPE	Picture	ITEM	Model	Ramp Height	Product size/mm	Packaging Size/mm	G.W. kg	Ramp Quantity	Load Limit	Water Proof groove
A		SKU1	KR-17	2.6inch	1220×410×65	1230×420×90	21.5	1pcs	15 tons	Y
		SKU2	KR-17	2.6inch	1220×410×65	1240×424×155	43	2pcs	15 tons	Y
		SKU3	KR-17	2.6inch	1220×410×65	1240×425×210	64	3pcs	15 tons	Y
B		SKU4	KR-03	3.7inch	1000×250×90	1010×260×100	14.5	1pcs	15 tons	Y
		SKU5	KR-04	4.25inch	500×300×105	510×310×120	9	1pcs	15 tons	Y
		SKU6	KR-05	6inch	491×370×152	510×390×185	14.3	1pcs	15 tons	Y
		SKU7	KR-06	4.3inch	500×320×110	510×330×150	19.5	2pcs	15 tons	Y
		SKU8	KR-07	5inch	482.6×330×127	500×340×180	19.5	2pcs	15 tons	Y
		SKU9	KR-05	6inch	491×370×152	510×390×250	27.5	2pcs	15 tons	Y
C		SKU10	KR-09	1inch	1130×241.3×25.4	1140×250×50	6	1pcs	15 tons	Y
		SKU11	KR-10	1.5inch	1100×320×38	1110×330×50	10.8	1pcs	15 tons	Y
		SKU12	KR-11	2inch	1110×406.4×50	1120×417×60	13	1pcs	15 tons	Y
		SKU13	KR-12	3inch	901.7×457.2×76.2	912×468×87	15.8	1pcs	15 tons	Y
		SKU14	KR-13	3.5inch	901.7×533.4×88.9	912×544×100	21.5	1pcs	15 tons	Y
		SKU15	KR-14	4inch	901.7×619.8×101.6	910×640×136	26.3	1pcs	15 tons	Y
D		SKU16	KR-15	1.2inch	900×200×30	920×220×60	5.2	1pcs	15 tons	N
		SKU17	KR-16	1.6inch	900×200×40	923×232×64	6.2	1pcs	15 tons	N

## INSTALLATION STEPS FOR TYPE A(SKU1~SKU3)

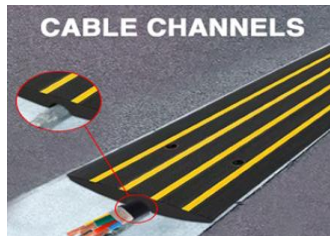
### STEP 01 select the dimension

The sizes of the type A curb ramps are listed in parameter table. The load limit is 15 tons. Please choose the size that matches the ramp .



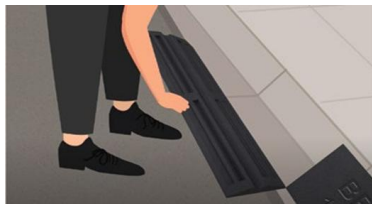
### STEP 02 Align ramp sections

Facing your house, ensure that the ramp sections are in the correct order, paying attention to the angle of the ends.



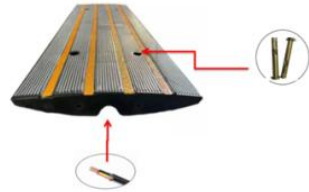
### STEP 03 Flip ramp into street

Turn the ramp sections over into the street so that they are flat side down. If you have additional center sections, the hardware from one side of that ramp must be removed. To remove excess hardware from one side, strike underneath the bolt head with the claw portion of your hammer and extract.



## STEP 04 Tighten the screws

M8\*10 Expansion Bolts need to be fixed for installation. The groove can be used for drain water or protect cables. the blind holes in the ramp need to be drilled through to allow the screw to pass through the ramp and lock into the ground



## INSTALLATION STEPS FOR TYPE B(SKU4~SKU9)

### STEP 01 Select the dimension

The sizes of the type B curb ramps are listed in parameter table. The load limit is 15 tons. Please choose the size that matches the ramp .



### STEP 02 Align ramp sections

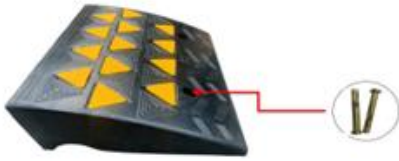
Facing your house, ensure that the ramp sections are in the correct order, paying attention to the angle of the ends.



### STEP 03 Sighten the screws

M8\*10 Expansion Bolts need to be fixed for installation. the blind holes in the ramp need to be drilled through to allow the screw to pass through the

ramp and lock into the ground.



## INSTALLATION STEPS FOR TYPE C(SKU10~SKU15)

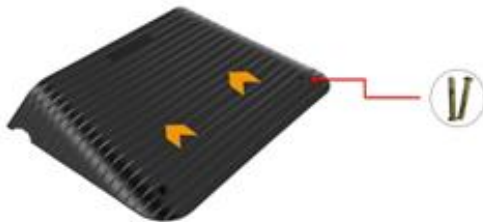
### STEP 01 Select the dimension

The sizes of the type C curb ramps are listed in parameter table. The load limit is 15 tons. Please choose the size that matches the ramp.



### STEP 02 Tighten the screws

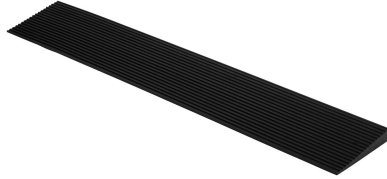
M8\*10 Expansion Bolts need to be fixed for installation.the blind holes in the ramp need to be drilled through to allow the screw to pass through the ramp and lock into the ground.



## INSTALLATION STEPS FOR TYPE D(SKU16~SKU17)

### STEP 01 Dimension select

The sizes of the type D curb ramps are listed in parameter table. The load limit is 15 tons. Please choose the size that matches the ramp.



### STEP 02 Use the adhesive tape

Use double-sided tape to secure to the ground.



### How to Keep Ramp From Moving Out of Place

Don't enter the driveway at an angle. If you can drive out to the street with both tires impacting the ramps at the same time, the ramps will stay put.

### How to Adjust Position of A Curb Ramp Set

Straddle the ramp at the center. Pick up the ramp and lean back in the direction you want it to go.



### **How to Clean Beneath The Ramp**

Clean out underneath the ramp 2 ~3 times a year or more frequently if you have a lot of gutter build-up. To turn the ramp over, start at one end, pull the top of the ramp up and out toward the street. Use a hose to clean the ramp's underside and the gutter. To return in place, simply start at one end and flip back toward curb as you walk along the ramp.

### **How to Take A Curb Ramp Apart**

Turn ramp over into the street, so the flat side is down. Put a flat head screwdriver between the waterway rubber and bolt. Pry up toward the waterway lifting the bolt up enough to remove the nuts. Using a hammer and screwdriver as a punch, drive the bolt back through the adjoining section. Be careful not to damage the bolt threads.

### **How to Add Another Ramp Section (only for type A)**

After removing the nut, using a screwdriver as a punch, hammer the bolt back through the adjoining section. Be careful not to damage the bolt threads.

**Importer:** WAITCHX

**Address:** 250 bis boulevard Saint-Germain 75007 Paris

**Importer:** FREE MOOD LTD

**Address:** 2 Holywell Lane, London, England, EC2A 3ET

**Manufacturer:** Zhejiang Luba Traffic Technology Co.,Ltd

**Address:** No.300 West Guangming Road, Sanmen, Zhejiang, China

**Made In China**



EUREP UK LTD

UNIT 2264, 100 OCK STREET, ABINGDON

OXFORDSHIRE ENGLAND OX14 5DH



EUREP GmbH

Unterlettenweg 1a, 85051

Ingolstadt, Germany



**VEVOR<sup>®</sup>**

**TOUGH TOOLS, HALF PRICE**

**Technical Support and E-Warranty Certificate**  
**[www.vevor.com/support](http://www.vevor.com/support)**