

◆ BXC3A BACKPACK VACUUM CLEANER

# BXC3A

## BACKPACK VACUUM CLEANER



Subagency

**OWNER'S GUIDE**

# MOTOR MAINTENANCE

The carbon brushes inside the suction motor should be inspected once a year by the service personnel.

## MAIN FAULTS AND TREATMENTS

Faults Symptom	Possible Reasons	Treatments
The machine doesn't run after connected the power	There is not power supply during each use.	Check the power use.
	The power line is damaged.	Replace the power line
	Switch wiring loose or damaged	Check or replace the switch
	The carbon brushes of vacuum motor is frayed.	Replace carbon brushes or vacuum motor
When the machine works, there is no vacuum suction or vacuum suction is small	The vacuum motor is damaged.	Replace vacuum motor
	The dust bucket and top cover are not sealed	Check and seal well
	Dust bag or tank body have too much garbage	Cleaning dust bag or tank body garbage
Machine abnormalities, large vibration	Suction tube or nozzle elbow block	Dredging the dust suction pipe or nozzle elbow
	Dust vacuum motor is abnormal or damaged	Maintain or replace dust vacuum motor

## CAUTIONS

1. This machine is not intended for use by the physically weak, intellectually obtuse, mentally disabled or children, unless it is safely used under the help or instruction of those who are responsible for their safety.
2. The children shall be supervised to ensure that they will not play the machine.
3. Be sure to remove the power plug from the socket before cleaning or repairing the machine.
4. In the event that the power cables are damaged or loose, please have them replaced

# Contents

Production introduction-----	1
Main structure-----	1
Exploded view-----	2-3
Technical specification-----	4
Standard configuration-----	4
Instructions-----	5
Usage of dust vacuum-----	5
Safety code and attentions-----	5
Cleaning and maintenance-----	5
Motor maintenance-----	6
Main faults and treatments-----	6

## USE INSTRUCTIONS

1. Make sure that the power supply in the building is identical to that shown on the voltage plate.
2. Assemble suction hose, wards and suitable tool.
3. Connect suction hose to tank connector of vacuum cleaner (top of the elbow)

## USAGE OF DUST VACUUM

1. Please note that use identical power supplies before use.
2. Clean and install the dust bag before use.
3. This machine prohibit using for water absorption, if water absorption, will result in the motor damage. (if the motor damage because of inlet water, not belong to the scope of warranty)

## SAFETY CODE AND ATTENTIONS

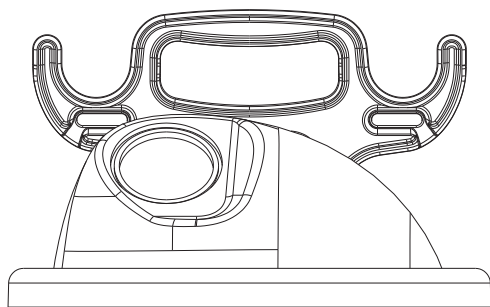
1. Remove the power plug before clean or maintain the machine.
  - 2.1. Examine the power line before using, only make sure the power line is not damaged that can use it.
  3. If the power line is damaged or the machine break down, must be repaired or replaced by after-sales service or by professionals. So as to avoid adverse consequences.

## CLEANING AND MAINTENANCE

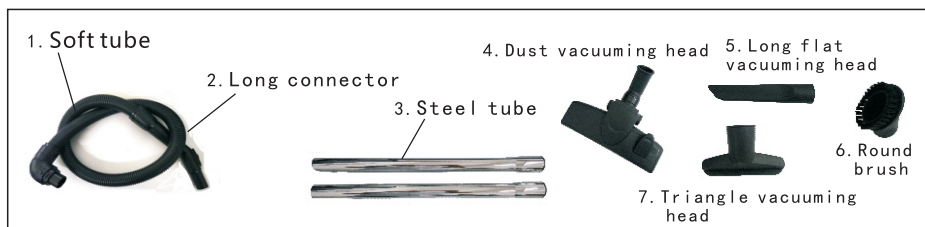
1. Clean tank, do not let it stand for a long time with dust or dirty water.
2. After each use, clean the dust on the dust bag, flick the dust on the filter core.
3. Examine the power line, make sure the power line is not damaged.
- 4.1. Cleaning dust bag with detergent and warm water, it can be used after the dust bag dry.
5. Dust bag should be replaced once per 1-2 years .

# Technical specification

Model	BXC3A
Function	Vacuum cleaner
Capacity	5L
Voltage	220V~/50Hz -60Hz
Power	1000W
Vacuum degree	20KPA
Air flow	3.26L/S
Cooling method	Circulating Air Cooling
Power Line	3x0.75mm <sup>2</sup> x18m
Accessories	ø32mm



# Standard configuration



# Product introduction

Thanks for using BXC3A backpack vacuum cleaner. The backpack vacuum has fashionable appearance, reasonable design, light and handy, also with the stronger power vacuum dry motor, which also makes it have more durable working time. The perfect backpack design makes the user feel more comfortable and efficient when using. No matter in the narrow channel, pipelines, escalator or other places, you could use it to clean. And it matches the standard total set of accessories, to make it convenient to use for the high above the ground work or floor cleaning. It is suitable for the restaurant, hotel, and other work place, etc.

# Main structure

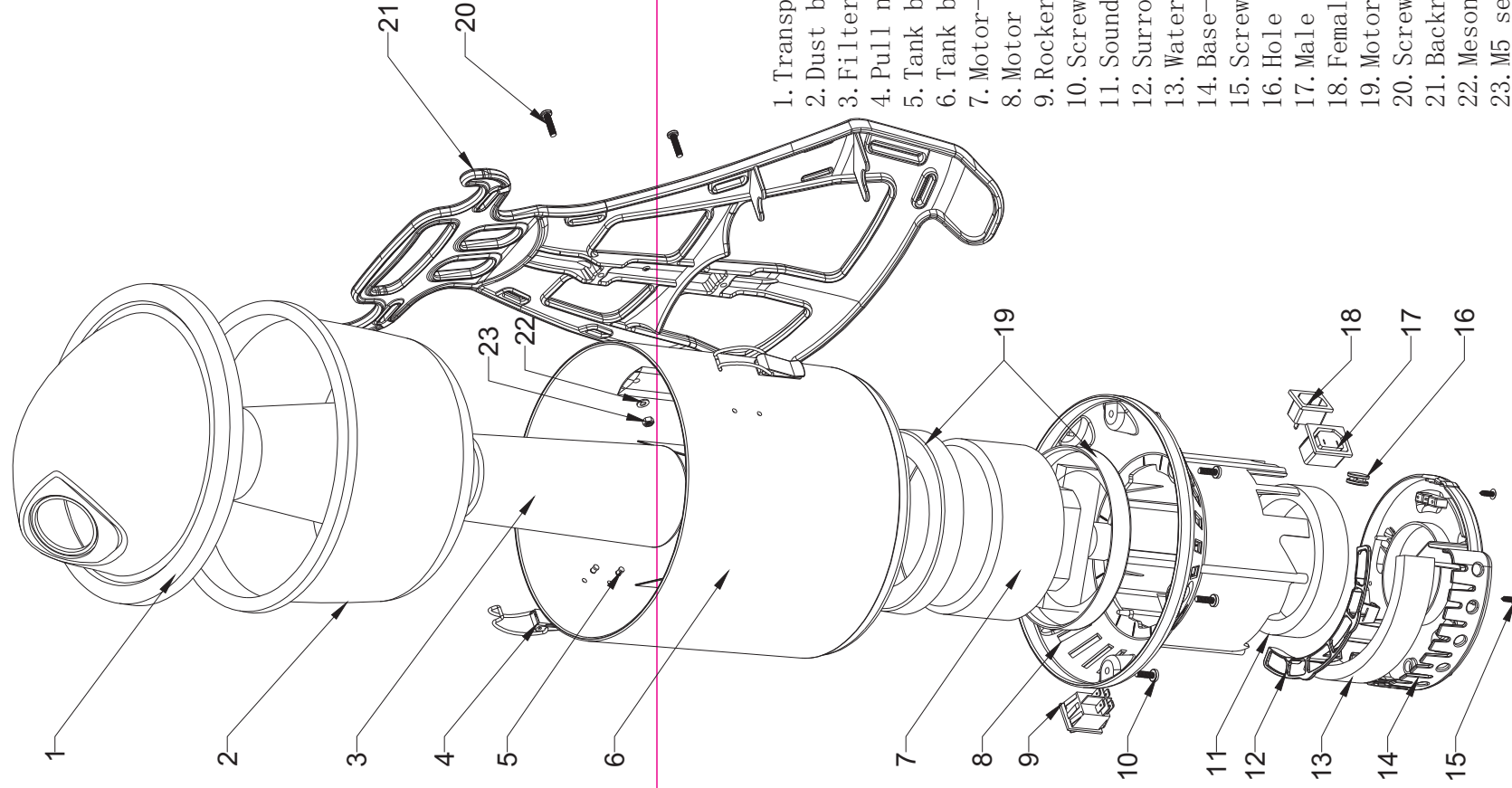
- 1.Backrest
- 2.Transparent cover
- 3.Body
- 4.Motor fixed frame
- 5.Surrounding edge
- 6.Base
- 7.Braces
- 8.Buckle
- 9.Soket 1



- 10.Soket 2
- 11.Switch



# BXC3A BACKPACK VACUUM CLEANER EXPLODED VIEW



1. Transparent cover--1 piece
2. Dust bag--1 piece
3. Filter core--1 piece
4. Pull nails--4 pieces
5. Tank buckles--2 pieces
6. Tank body--1 piece
7. Motor--1 piece
8. Motor fixed frame--1 piece
9. Rocker switch--1 piece
10. Screws BBH5\*16-- 6 pieces
11. Soundproof cotton--1 piece
12. Surrounding edge--1 piece
13. Water filter cotton--1 piece
14. Base--1 piece
15. Screws TAH4\*12-- 4 pieces
16. Hole stopper--1 piece
17. Male plug--1 piece
18. Female plug--1 piece
19. Motor gaskets--2 pieces
20. Screws PM5\*20-- 2 pieces
21. Backrest-- 1 piece
22. Meson 10\*5\*1--2 pieces
23. M5 self-locking nut--2 pieces