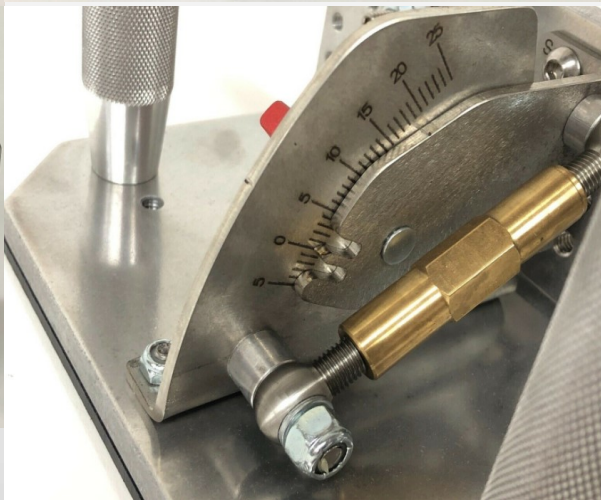
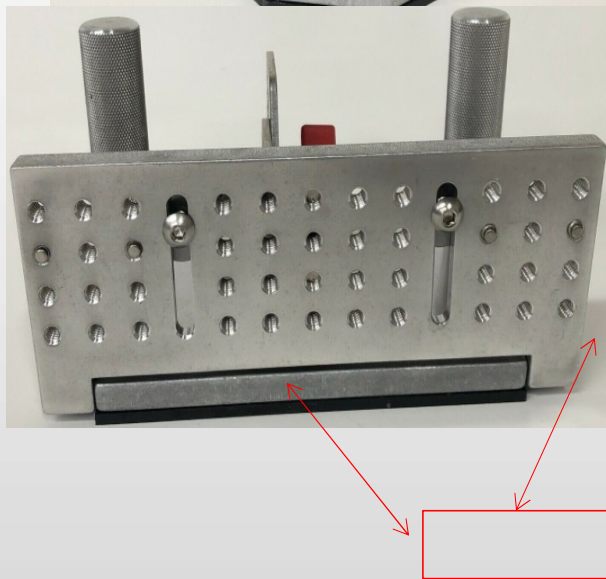
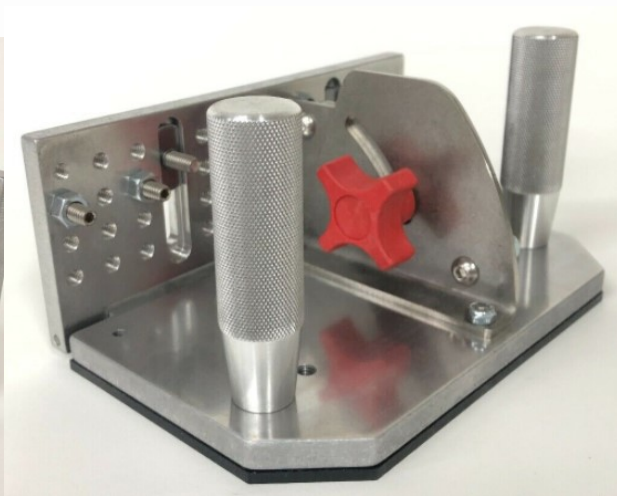
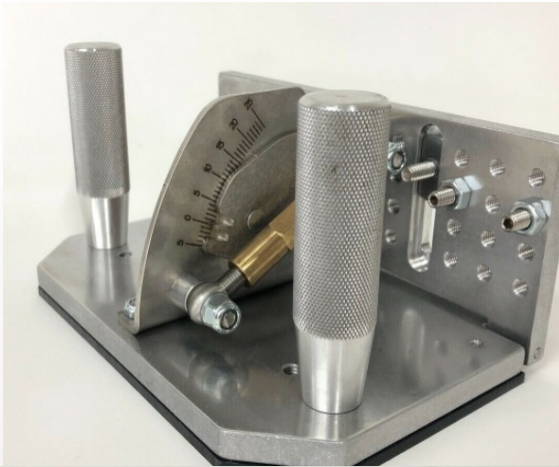


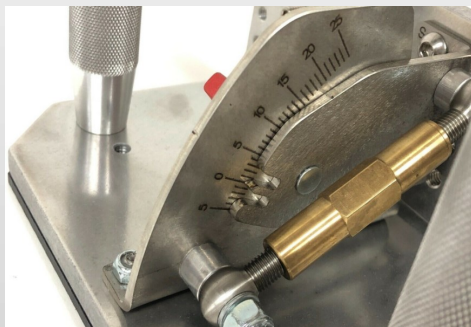
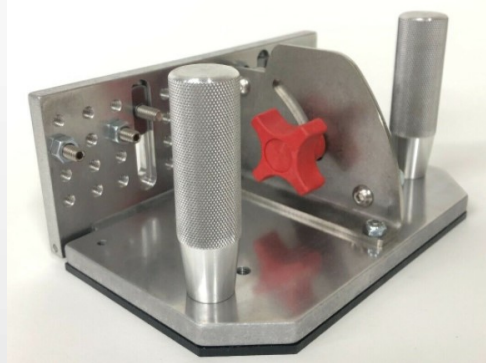
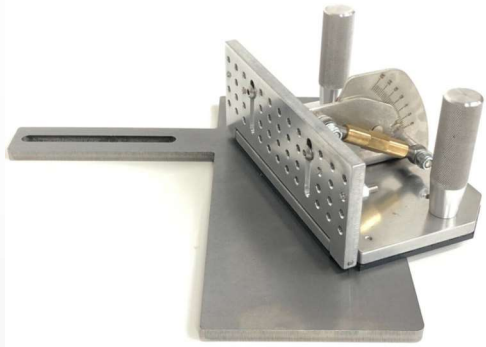
Knife Making Belt Grinder Angle Grind Guide

Angle Grind Guide-regular



- Front mounting plate measures 7-3/4" wide & stands 3-1/4" tall.
- 1/4-20 Tapped mounting holes
- 2 slotted mounting points
- Lasered stainless-steel protractor plate
- Needle pointer can be adjusted with a screwdriver for absolute accuracy
- Zero play hinges
- Two aluminum knurled handles for secure grip & superior "feel"; handles are 3-1/2" tall
- .150" ABS sheet on the bottom plate to provide an exceptionally smooth sliding action when plunge grinding. Stainless-steel dog point set screws which can be placed strategically along spine of blade.

Angle Grind Guide-regular with Large Tool Rest

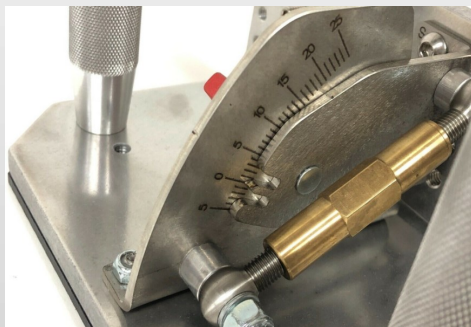
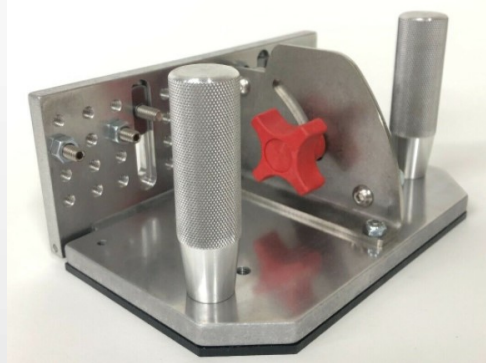
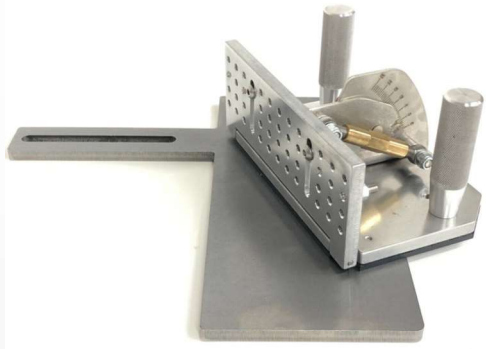


- Front mounting plate measures 7-3/4" wide & stands 3-1/4" tall.
- 1/4-20 Tapped mounting holes
- 2 slotted mounting points
- Lasered stainless-steel protractor plate
- Needle pointer can be adjusted with a screwdriver for absolute accuracy
- Super fine thread turnbuckle for absolute precision adjustments
- Lock knob & turnbuckle combination assures zero movement
- Zero play hinges
- Two aluminum knurled handles for secure grip & superior "feel"; handles are 3-1/2" tall
- .150" ABS sheet on the bottom plate to provide an exceptionally smooth sliding action when plunge grinding.

TOOL REST:

Solid steel tool rest, 3/8" thick unfinished steel. This rest bolts directly onto a 1.5"x1.5" main tooling arm, or to an extra tooling arm in the bottom slot of

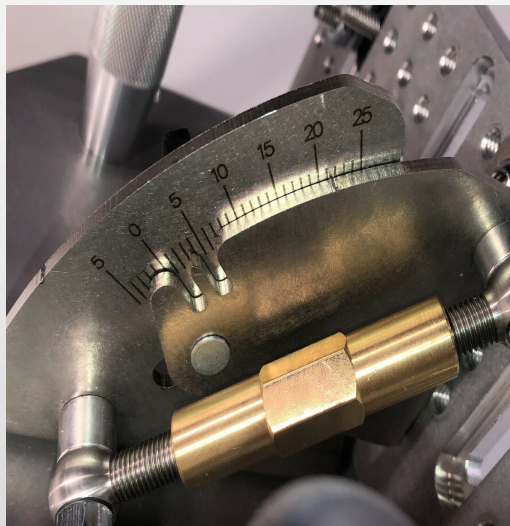
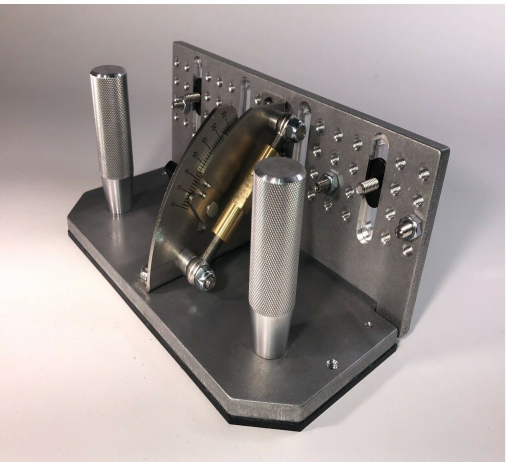
Angle Grind Guide-regular with Large Tool Rest



TOOL REST:

- Solid steel tool rest, 3/8" thick unfinished steel.
- This rest bolts directly onto a 1.5"x1.5" main tooling arm, or to an extra tooling arm in the bottom slot of the grinder.
- The slot allows it to be moved closer to or further away from the belt.
- We leave the surface unfinished: sand it smooth or drill & tap it easily for your fixtures.
- The work surface measures 11-3/4" wide by 5-1/4" deep.

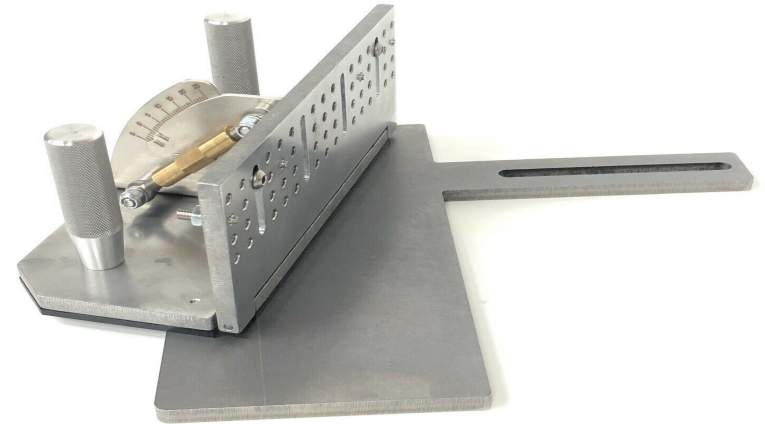
Angle Grind Guide -Large



- Front mounting plate measures 9-3/4" wide & stands 4" tall.
- 1/4-20 Tapped mounting holes
- 4 slotted mounting points
- Lasered stainless-steel protractor plate
- Needle pointer can be adjusted with a screwdriver for absolute accuracy
- Super fine thread turnbuckle for absolute precision adjustments
- Lock knob & turnbuckle combination assures zero movement
- Zero play hinges
- Two aluminum knurled handles for secure grip & superior "feel"; handles are 3-1/2" tall
- .150" ABS sheet on the bottom plate to provide an exceptionally smooth sliding action when plunge grinding.
- Stainless-steel dog point set screws which can be placed strategically along spine of blade

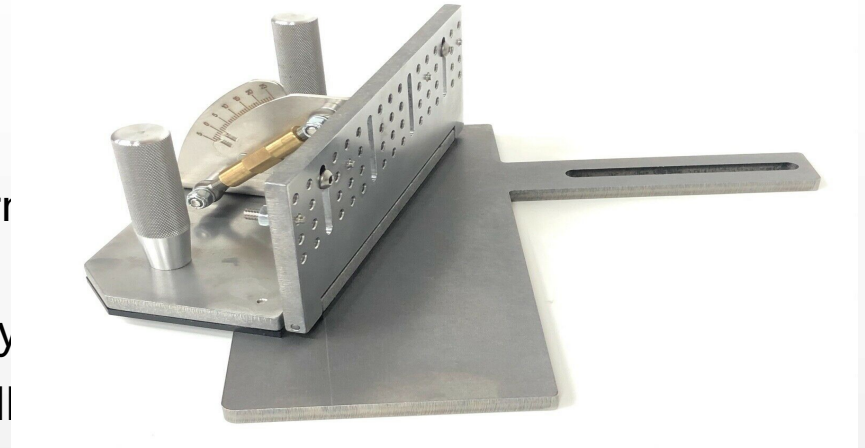
Angle Grind Guide (Large) & Large Tool Rest

- Front mounting plate measures 9-3/4" wide & stands 4
- 1/4-20 Tapped mounting holes
- 4 slotted mounting points
- Lasered stainless-steel protractor plate
- Needle pointer can be adjusted with a screwdriver for a
- Super fine thread turnbuckle for absolute precision adj
- Lock knob & turnbuckle combination assures zero movement
- Zero play hinges
- Two aluminum knurled handles for secure grip & superior "feel"; handles are 3-1/2" tall
- .150" ABS sheet on the bottom plate to provide an exceptionally smooth sliding action when plunge grinding.
- Stainless-steel dog point set screws which can be placed strategically along spine of blade.



Angle Grind Guide (Large) & Large Tool Rest

- TOOL REST:
- Solid steel tool rest, 3/8" thick unfinished steel.
- This rest bolts directly onto a 1.5"x1.5" main tooling arm bottom slot of the grinder.
- The slot allows it to be moved closer to or further away
- We leave the surface unfinished: sand it smooth or drill easy to weld angles or holding plates onto.
- The work surface measures 11-3/4" wide by 5-1/4" deep.



Belt Grinder Tool Rest Large



Solid steel tool rest, 3/8" thick unfinished steel. This rest bolts directly onto a 1.5"x1.5" main tooling arm, or to an extra tooling arm in the bottom slot of the grinder. The slot allows it to be moved closer to or further away from the belt. We leave the surface unfinished: sand it smooth or drill & tap it easily for your fixtures. Also easy to weld angles or holding plates onto. The work surface measures 11-3/4" wide by 5-1/4" deep. This rest works very well with our Grind Guides.