

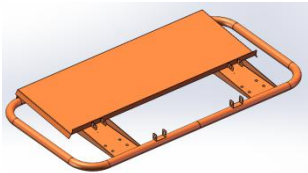
Product assembly instruction

1: Product overview and model classification

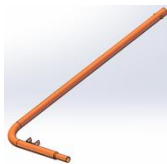
Product model	Name	Long (mm)	Wide (mm)	High (mm)
YMBC-3627	Plank wagon 36x27	915	700	1030
YMBC-4132	Plank wagon 41x32	1050	810	1030
YMBC-3624-1	Plank wagon 36x24-1	915	600	1030
YMBC-3624-2	Plank wagon 36x24-2	915	600	1030
YMBC-4522	Plank wagon 45x22	1120	540	1030



2: Product components



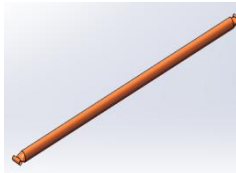
Mounting base*1



Handle lever 1*1



Handle lever 2*1



Support bar*2



bolt*6



The wheel1*2



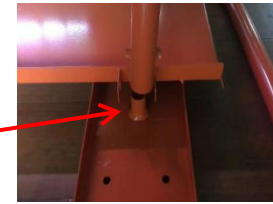
The wheel2*2



bolt*8

3: Product assembly steps

Step 1: Install tie Handle lever 1 or Handle lever 2 to the Mounting base and ensure that the tie rod tube is inserted into the reserved tube of the bottom bracket



Step 2: Using a special wrench, bolt through the Handle lever tube and the Mounting base tube and secure.



Step 3: Secure the other Handle lever to the Mounting base as per step 2, making sure the bolts are locked. Note: the two handrails should be aligned and inserted together. Make sure that the clamp spring is locked and holds Handle lever 1 and 2 firmly.



Step 4: According to the method of step 2, two handrails are respectively fixed to the round pipe and the bottom frame of the handrail, and the final effect is as shown in the picture



Step 5: Assemble the four wheel groups into the corresponding positions of the bottom frame

